

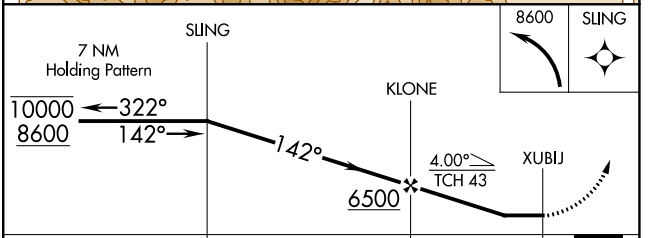
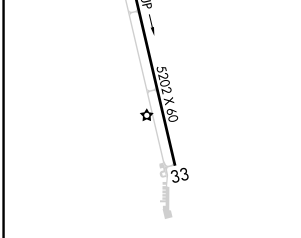
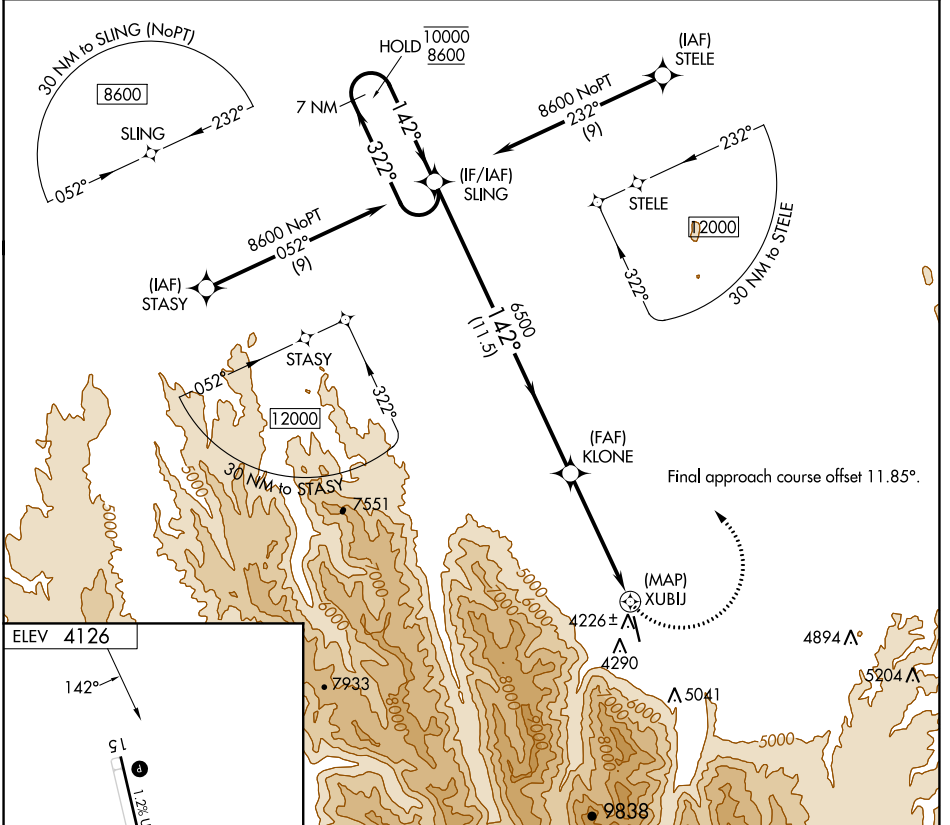
APP CRS	Rwy Idg	N/A
142°	TDZE	N/A
	Apt Elev	4126

# RNAV (GPS)-A

JOSEPH STATE (JSY)

RNP APCH - GPS.	MISSED APPROACH: Climbing left turn to 8600 direct SLING and hold, continue climb-in-hold to 8600.
<p>⚠ Circling NA southwest of Rwy 15-33.</p> <p>⚠ Procedure NA at night.</p> <p>Rwy 15 and 33 helicopter visibility reduction below 1 SM NA.</p>	

AWOS-3P <b>123.775</b>	SEATTLE CENTER <b>123.95 290.55</b>	UNICOM <b>122.8 (CTAF)</b>
---------------------------	--	-------------------------------



REIL Rwy 15	MIRL Rwy 15-33	<table border="1"> <thead> <tr> <th>CATEGORY</th> <th>A</th> <th>B</th> <th>C</th> <th>D</th> </tr> </thead> <tbody> <tr> <td> CIRCLING</td> <td>5000-1¼ 874 (900-1¼)</td> <td>5480-1½ 1354 (1400-1½)</td> <td colspan="2">NA</td> </tr> </tbody> </table>	CATEGORY	A	B	C	D	CIRCLING	5000-1¼ 874 (900-1¼)	5480-1½ 1354 (1400-1½)	NA	
CATEGORY	A	B	C	D								
CIRCLING	5000-1¼ 874 (900-1¼)	5480-1½ 1354 (1400-1½)	NA									

NW-1, 05 SEP 2024 to 03 OCT 2024

NW-1, 05 SEP 2024 to 03 OCT 2024