

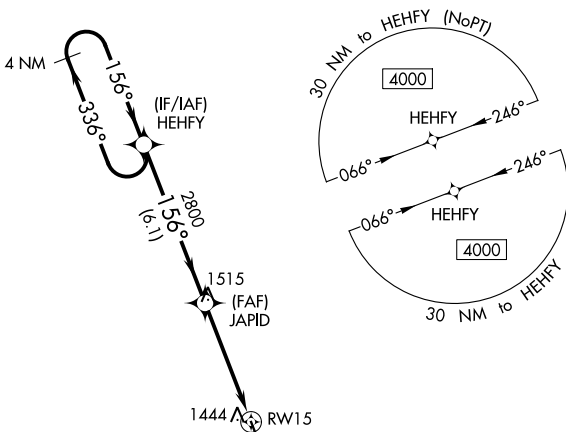
WAAS CH <b>58132</b> <b>W15A</b>	APP CRS <b>156°</b>	Rwy Idg TDZE Apt Elev	<b>3501</b> <b>1306</b> <b>1306</b>
--	------------------------	-----------------------------	---

# RNAV (GPS) RWY 15

TECUMSEH MUNI (ØG3)

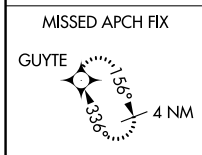
RNP APCH.	Baro-VNAV NA. Rwy 15 helicopter visibility reduction below ¾ SM NA. Use Nebraska City altimeter setting, when not received, use Beatrice altimeter setting and increase all DA 3 feet and all MDA 20 feet.	MISSED APPROACH: Climb to 4000 direct GUYTE and hold.
-----------	---	---

AFK AWOS-3PT <b>128.325</b>	MINNEAPOLIS CENTER <b>126.4 317.7</b>	CTAF <b>122.9</b>
--------------------------------	--	----------------------

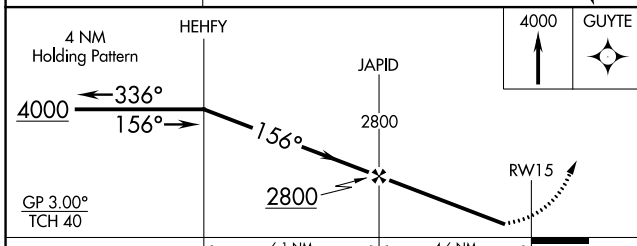
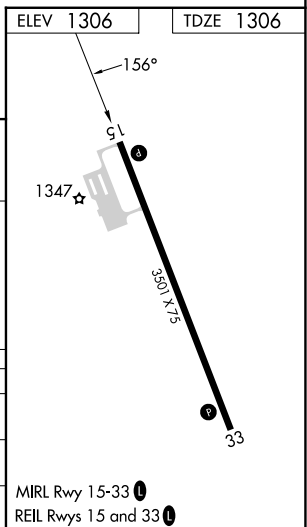


NC-2, 05 SEP 2024 to 03 OCT 2024

NC-2, 05 SEP 2024 to 03 OCT 2024



1786



CATEGORY	A	B	C	D
LPV DA	1619-1	313 (400-1)		NA
LNAV/VNAV DA	1670-1¼	364 (400-1¼)		NA
LNAV MDA	1780-1	474 (500-1)		NA

MIRL Rwy 15-33   
REIL Rwys 15 and 33