

APP CRS <b>127°</b>	Rwy Idg <b>3600</b>
	TDZE <b>1545</b>
	Apt Elev <b>1545</b>

# RNAV (GPS) RWY 12

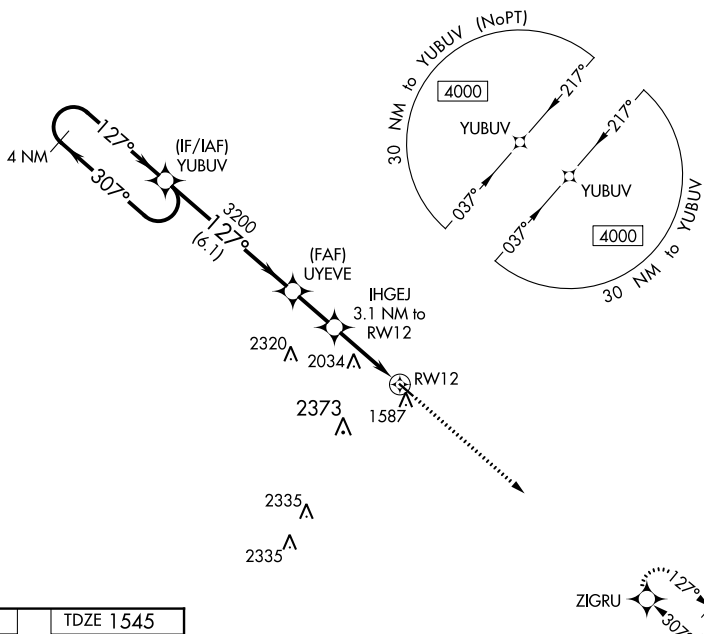
WESSINGTON SPRINGS (4X4)

**NA** DME/DME RNP-0.3 NA. When local altimeter setting not received use Mitchell altimeter setting: increase all MDA 100 feet, LNAV visibility Cat C ½ SM and Circling visibility Cat A ¼ SM.

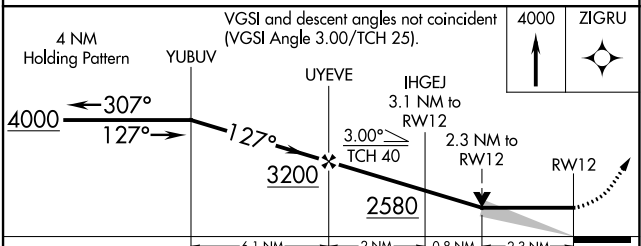
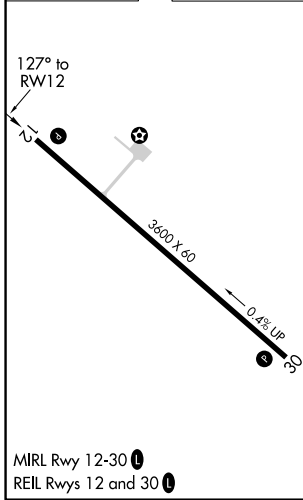
**MISSED APPROACH:** Climb to 4000 direct ZIGRU and hold.

MINNEAPOLIS CENTER  
**126.25 339.8**

CTAF  
**122.90**



ELEV 1545	TDZE 1545
-----------	-----------



CATEGORY	A	B	C	D
LNAV MDA	2300-1 755 (800-1)	2300-1¼ 755 (800-1¼)	2300-2 755 (800-2)	NA
<b>C</b> CIRCLING	2300-1 755 (800-1)	2340-1¼ 795 (800-1¼)	2720-3 1175 (1200-3)	NA

NC-1, 05 SEP 2024 to 03 OCT 2024

NC-1, 05 SEP 2024 to 03 OCT 2024