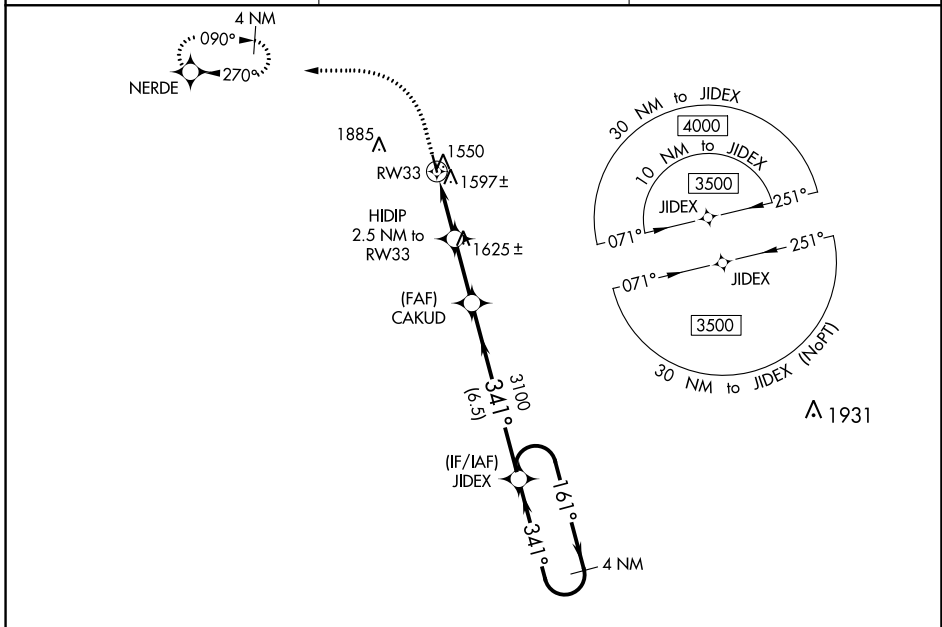


WAAS CH 53540 W33A	APP CRS 341°	Rwy ldg 3500 TDZE 1511 Apt Elev 1511
--	------------------------	---

RNAV (GPS) RWY 33

LAKOTA MUNI (5L~~0~~)

RNP APCH - GPS.		MISSED APPROACH: Climb to 2300 then climbing left turn to 3300 direct NERDE and hold.
▽ Baro-VNAV NA. Rwy 33 helicopter visibility reduction below 3/4 SM NA. ▲ NA Circling Rwy 15 NA at night. Use Devils Lake altimeter setting.		
DVL AWOS-3PT 125.875	MINNEAPOLIS CENTER 132.15 269.6	UNICOM 122.8 (CTAF) 0



ELEV 1511	TDZE 1511	R-5403	
2300	3300	NERDE	VGSI and RNAV glidepath not coincident (VGSI Angle 3.00/TCH 26).
CAKUD 3100 HIDIP 2.5 NM to RW33 RW33 2340 JIDEX 3100 4 NM Holding Pattern 3500		GP 3.00° TCH 40	
2.5 NM 2.4 NM 6.5 NM			
CATEGORY	A	B	C
LPV DA	1827-1 1/8	316 (400-1 1/8)	NA
LNAV/VNAV DA	1827-1 1/8	316 (400-1 1/8)	NA
LNAV MDA	1920-1	409 (500-1)	1920-1 1/8 409 (500-1 1/8)
<input checked="" type="checkbox"/> CIRCLING	2080-1 569 (600-1)	2200-1 689 (700-1)	2320-2 1/4 809 (900-2 1/4)

NC-1, 05 SEP 2024 to 03 OCT 2024

NC-1, 05 SEP 2024 to 03 OCT 2024