

APP CRS	Rwy Idg	N/A
264°	TDZE	N/A
	Apt Elev	720

RNAV (GPS)-A

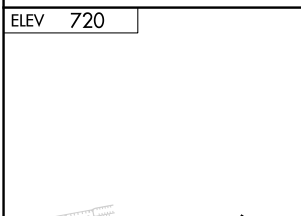
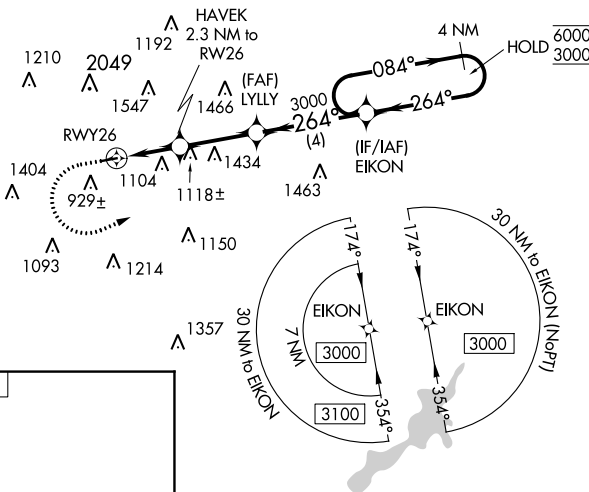
MORAINE AIR PARK (I73)

RNP APCH - GPS.		MISSED APPROACH: Climb to 1500 then climbing left turn to 3000 direct EIKON and hold.
<p>▼ Procedure NA at night.</p> <p>▲ NA Rwy 8 and 26 helicopter visibility reduction below 1 SM NA. Use Dayton-Wright Brothers altimeter setting.</p>		

MGY ASOS 118.375	COLUMBUS APP CON 118.85 269.275	UNICOM 122.7 (CTAF)
----------------------------	-------------------------------------------	-------------------------------

EC-2, 05 SEP 2024 to 03 OCT 2024

EC-2, 05 SEP 2024 to 03 OCT 2024



1500 3000 EIKON	4 NM Holding Pattern			
	1780 RWY 26 2.3 NM 4.11° TCH 40	HAVEK 2.3 NM to RWY 26 1780 4.11° TCH 40	LYLLY 2.8 NM 3000	EIKON 4 NM 3000 6000 084° 264°
CATEGORY	A	B	C	D
CIRCLING	1440-1 720 (800-1)	1520-1 800 (800-1)	NA	