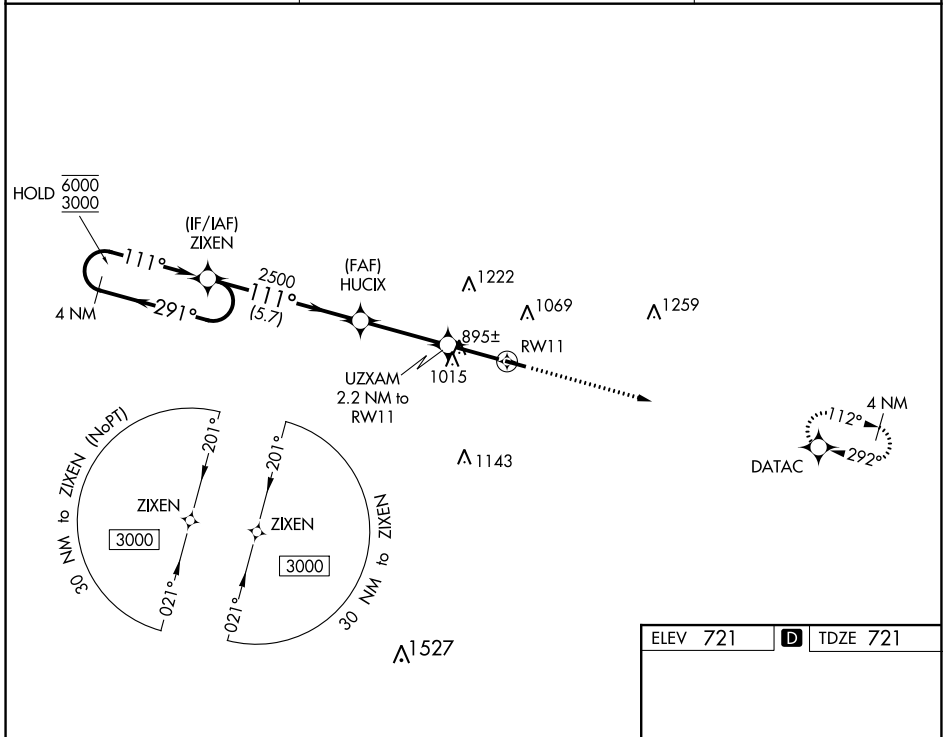


WAAS CH 62837 W11A	APP CRS 111°	Rwy Idg TDZE 721 Apt Elev 721	3850
--	------------------------	---	-------------

RNAV (GPS) RWY 11

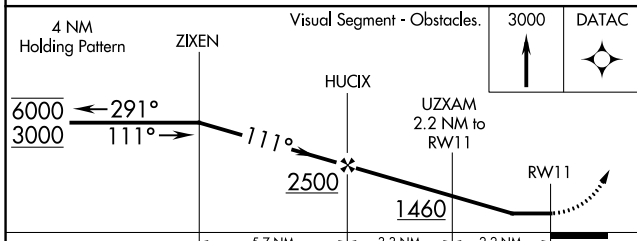
CYNTHIANA-HARRISON COUNTY (ØIS)

RNP APCH.		MISSED APPROACH: Climb to 3000 direct DATAC and hold.
27K AWOS-3 119.975	LEXINGTON APP CON 120.15 259.3 (040°-220°) 120.75 298.9 (221°-039°)	UNICOM 122.8 (CTAF) Ø

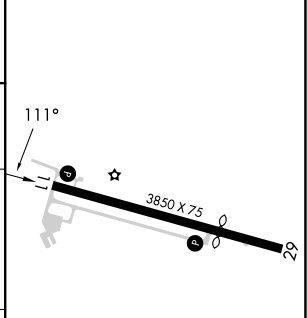


SE-1, 05 SEP 2024 to 03 OCT 2024

SE-1, 05 SEP 2024 to 03 OCT 2024



ELEV 721	D TDZE 721
----------	-------------------



CATEGORY	A	B	C	D
LP MDA	1220-1	499 (500-1)		NA
LNAV MDA	1300-1	579 (600-1)		NA
C CIRCLING	1340-1 619 (700-1)	1560-1¼ 839 (900-1¼)		NA

MIRL Rwy 11-29 **Ø**
REIL Rwy 11 and 29 **Ø**