

APP CRS	Rwy Idg	NA
<b>189°</b>	TDZE	NA
	Apt Elev	<b>106</b>

# RNAV (GPS)-B

UMATILLA MUNI (X23)

RNP APCH - GPS.

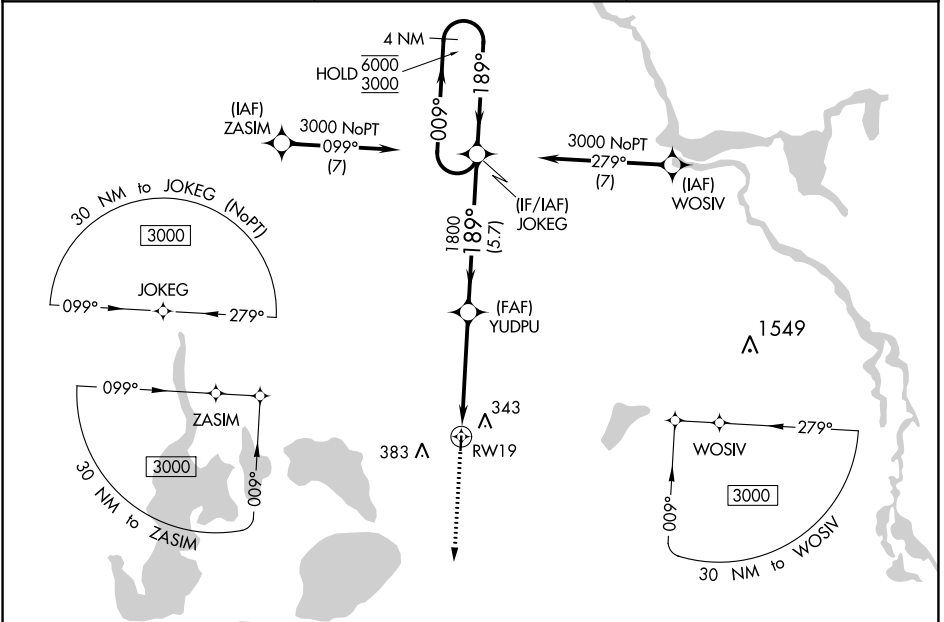
Procedure NA at night.  
 NA Rwy 1, 19 helicopter visibility reduction below 1 SM NA.  
 Use Leesburg altimeter setting.

MISSED APPROACH: Climb to 3000 direct TENUY and hold, continue climb-in-hold to 3000.

LEE ASOS  
**134.325**

ORLANDO APP CON  
**135.3 351.9**

CTAF  
**122.9**



SE-3, 05 SEP 2024 to 03 OCT 2024

SE-3, 05 SEP 2024 to 03 OCT 2024

