

WAAS CH <b>93740</b> W24A	APP CRS <b>240°</b>	Rwy Idg TDZE <b>6051</b> <b>7913</b> Apt Elev <b>7955</b>
---------------------------------	------------------------	--

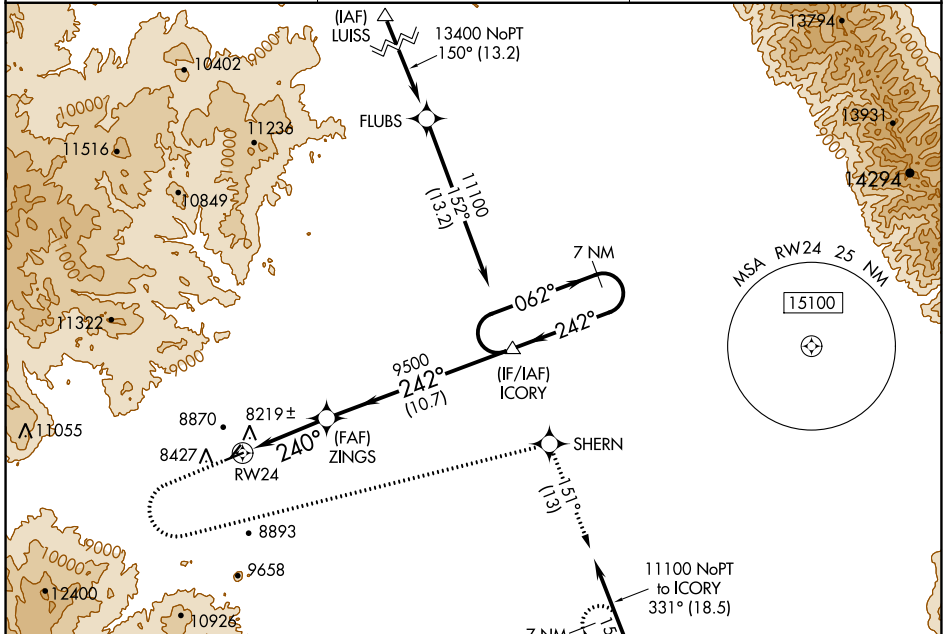
# RNAV (GPS) RWY 24

ASTRONAUT KENT ROMINGER (RCV)

**⚠** For uncompensated Baro-VNAV systems, LNAV/VNAV NA below -30°C (-22°F) or above 54°C (130°F). Circling NA northwest of Rwy 6-24. Circling Rwy 6 NA at night. DME/DME RNP-0.3 NA. Circling NA to Rwy 3/21.

**⚠** MISSED APPROACH: Climb to 8600 then climbing left turn to 11100 direct SHERN and on track 151° to HOMME and hold. #Missed approach requires a minimum climb of 310 feet per NM to 9200.

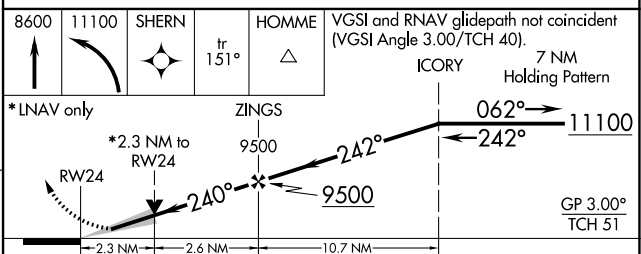
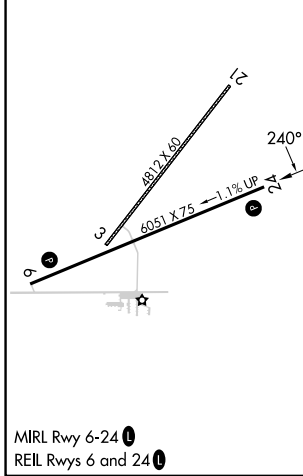
AWOS-3PT <b>118.275</b>	DENVER CENTER <b>128.375 379.95</b>	CTAF <b>122.9</b>
----------------------------	--	----------------------



SW-1, 05 SEP 2024 to 03 OCT 2024

SW-1, 05 SEP 2024 to 03 OCT 2024

ELEV 7955	TDZE 7913
-----------	-----------



CATEGORY	A	B	C	D
LPV DA #	8163-1	250 (300-1)		NA
LPV DA	8220-1 1/8	307 (300-1 1/8)		NA
LNAV/VNAV DA	8443-1 7/8	530 (500-1 7/8)		NA
LNAV MDA	8680-1 767 (800-1)	8680-1 1/4 767 (800-1 1/4)		NA
<input checked="" type="checkbox"/> CIRCLING	8700-1 745 (800-1)	8840-1 1/4 885 (900-1 1/4)		NA