

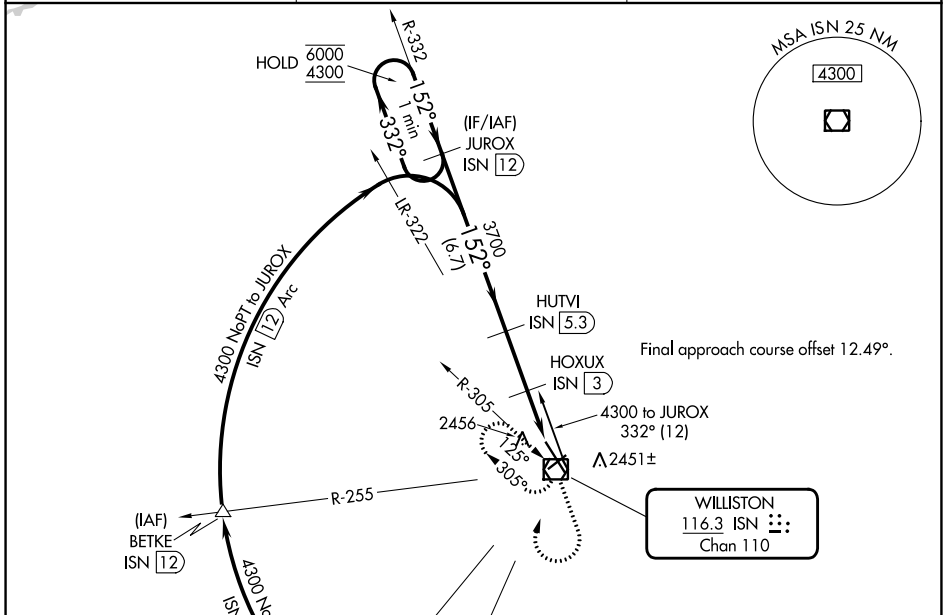
VOR/DME ISN 116.3 Chan 110	APP CRS 152°	Rwy Idg 7503 TDZE 2318 Apt Elev 2356
--	------------------------	---

VOR RWY 14

WILLISTON BASIN INTL (XWA)

DME required. ▼ ▲	MISSED APPROACH: Climb to 4300 then climbing right turn to 4300 direct ISN VOR/DME and hold
-------------------------	---

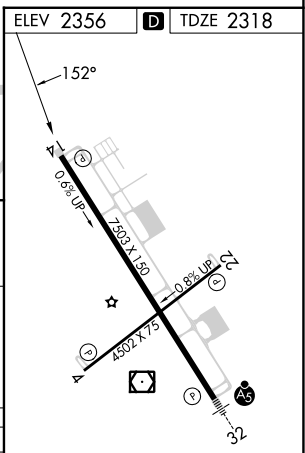
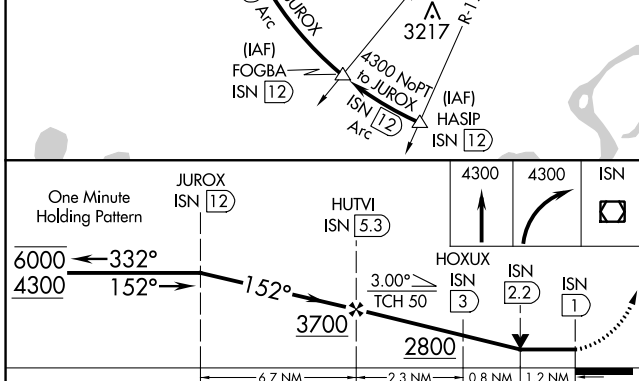
ASOS 125.925	SALT LAKE CITY CENTER 126.85 305.2	UNICOM 122.8 (CTAF) 0
------------------------	--	---------------------------------



NC-1, 05 SEP 2024 to 03 OCT 2024

NC-1, 05 SEP 2024 to 03 OCT 2024

ELEV 2356	D	TDZE 2318
-----------	---	-----------



CATEGORY	A	B	C	D
S-14	2720-1	402 (400-1)	2720-1½	402 (400-1½)
CIRCLING	2760-1 404 (500-1)	2820-1 464 (500-1)	2820-1½ 464 (500-1½)	2920-2 564 (600-2)

MIRL Rwy 4-22 0
HIRL Rwy 14-32 0
REIL Rwy 4, 14 and 22 0