

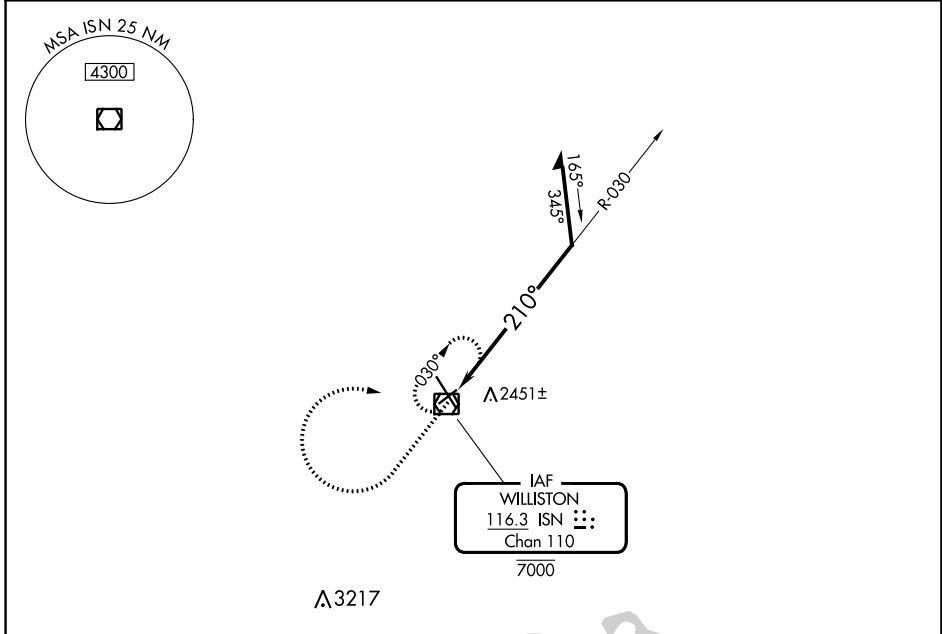
VOR/DME ISN 116.3 Chan 110	APP CRS 210°	Rwy Idg TDZE Apt Elev	4502 2339 2356
--	------------------------	-----------------------------	---

VOR RWY 22

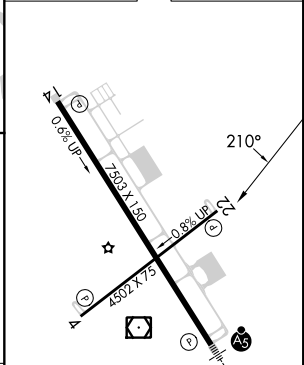
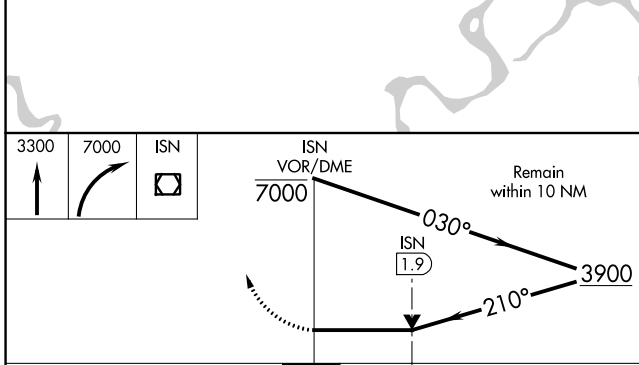
WILLISTON BASIN INTL (XWA)

⚠ MISSED APPROACH: Climb to 3300 then climbing right turn to 7000 direct ISN VOR/DME and hold, continue climb-in-hold to 7000.

ASOS 125.925	SALT LAKE CITY CENTER 126.85 305.2	UNICOM 122.8 (CTAF)
------------------------	--	-------------------------------



ELEV 2356	D TDZE 2339
-----------	--------------------



CATEGORY	A	B	C	D
S-22	2760-1	421 (500-1)	2760-1¼	421 (500-1¼)
C CIRCLING	2760-1 404 (500-1)	2820-1 464 (500-1)	2820-1½ 464 (500-1½)	2920-2 564 (600-2)

MIRL Rwy 4-22 **⓪**
HIRL Rwy 14-32 **⓪**
REIL Rwy 4, 14 and 22 **⓪**

NC-1, 05 SEP 2024 to 03 OCT 2024

NC-1, 05 SEP 2024 to 03 OCT 2024