

# HI-TACAN X RWY 34

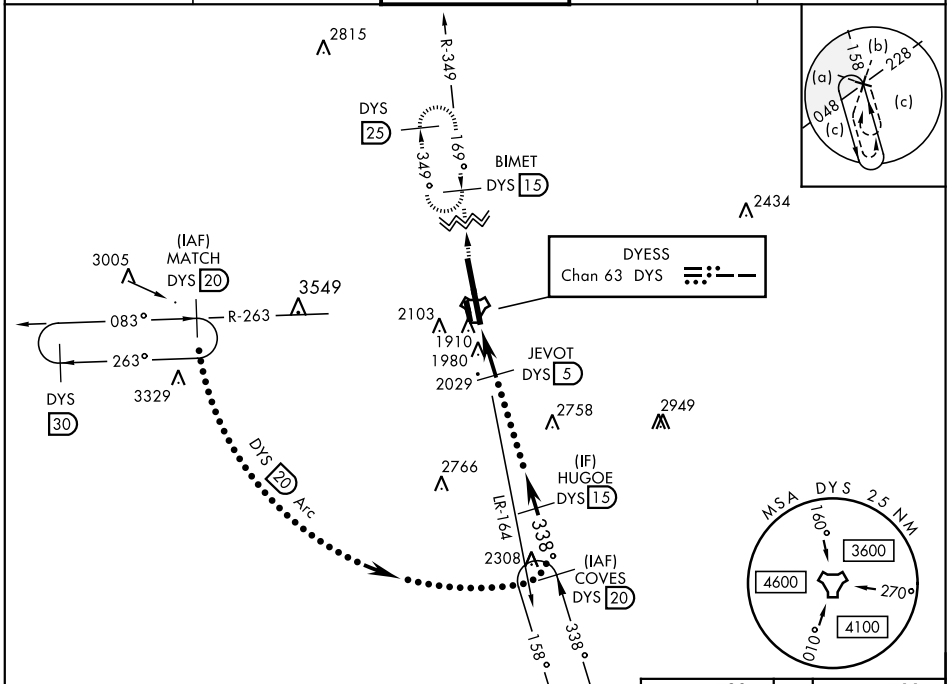
TACAN Chan <b>63</b>	APCH CRS <b>338°</b>	Rwy ldg <b>13,500</b> TDZE <b>1788</b> Arprt Elev <b>1790</b>
-------------------------	-------------------------	---

JAL-2 [USAF]

DYESS AFB (KDYS)

* When ALS inop, increase CAT CDE vis to 1 3/8 miles. ** Circling to other than Rwy 16 NA.	ALSF-1 	MISSED APPROACH: Climb to 4000 via DYS TACAN R-349 to BIMET and hold.
---	------------	--

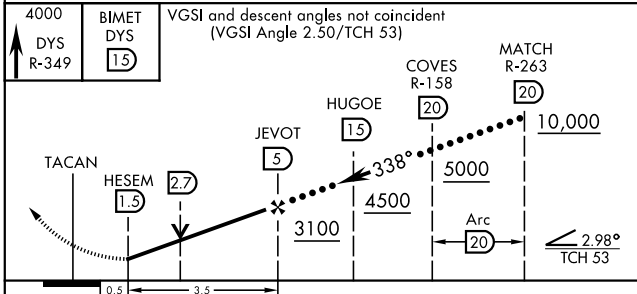
ATIS ★ <b>269.175</b>	ABILENE APP CON <b>125.0 338.3 EAST</b> <b>127.2 282.3 WEST</b>	DYESS TOWER <b>133.0 257.675</b>	GND CON <b>118.35 275.8</b>	ASR
--------------------------	---	-------------------------------------	--------------------------------	-----



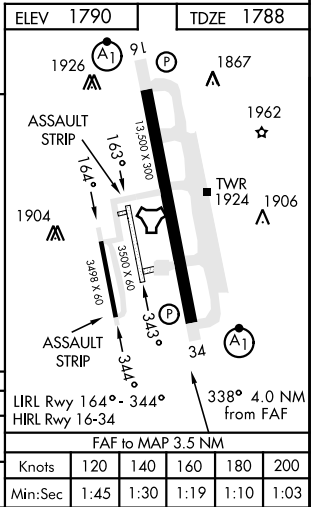
SC-2, 03 OCT 2024 to 31 OCT 2024

SC-2, 03 OCT 2024 to 31 OCT 2024

EMERG SAFE ALT 100 NM 4600



CATEGORY	C	D	E
	S-34 *	2280/50	492 (500-1)
CIRCLING **	2460-1 3/4 670 (700-1 3/4)	2460-2 670 (700-2)	2460-2 1/4 670 (700-2 1/4)



LIRL Rwy 164° - 344°	338° 4.0 NM from FAF
HIRL Rwy 16-34	
FAF to MAP 3.5 NM	
Knots	120 140 160 180 200
Min:Sec	1:45 1:30 1:19 1:10 1:03

# HI-TACAN X RWY 34