

ABILENE, TEXAS

# ILS or LOC W RWY 16

LOC I-TYY <b>109.9</b>	APCH CRS <b>164°</b>	Rwy ldg <b>13,500</b> TDZE <b>1790</b> Arprt Elev <b>1790</b>
---------------------------	-------------------------	---------------------------------------------------------------------

AL-2 [USAF]

DYESS AFB (KDYS)

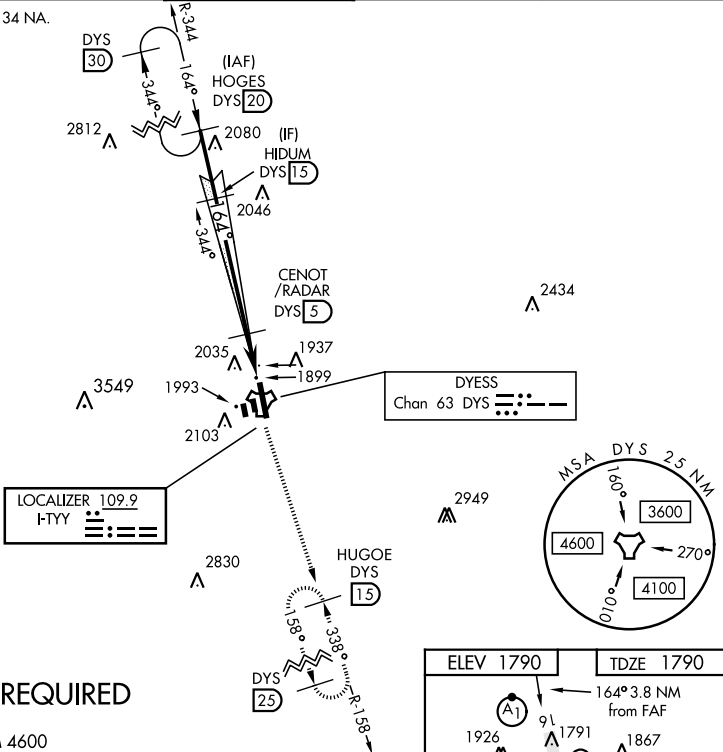
\* When ALS inop, increase all CAT RVR to 40 and vis to 3/4 mile.  
 \*\* When ALS inop, increase CAT AB RVR to 55 and vis to 1 mile, CAT CDE vis to 1 1/4 miles.



MISSED APPROACH: Climb to 4000 via  
 DYS TACAN R-158 to HUGOE and hold.

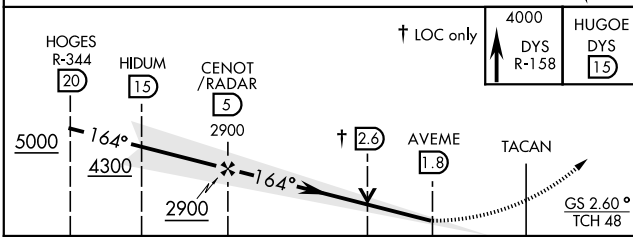
ATIS ★ <b>269.175</b>	ABILENE APP CON <b>125.0 338.3</b> EAST <b>127.2 282.3</b> WEST	DYESS TOWER <b>133.0 257.675</b>	GND CON <b>118.35 275.8</b>	ASR
--------------------------	-----------------------------------------------------------------------	-------------------------------------	--------------------------------	-----

\*\*\* Circling to other than Rwy 34 NA.

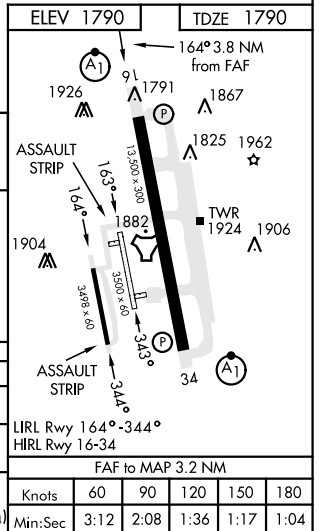


## RADAR or DME REQUIRED

EMERG SAFE ALT 100 NM 4600



CATEGORY	A	B	C	D	E
S-ILS 16 *	1990/24		200	(200-1/2)	
S-LOC 16 **	2220/24	430 (500-1/2)	2220/40		430 (500-3/4)
CIRCLING ***	2300-1 510 (600-1)	2320-1 530 (600-1)	2460-1 3/4 670 (700-1 3/4)	2460-2 670 (700-2)	2460-2 1/4 670 (700-2 1/4)



ABILENE, TEXAS

32°25'N-99°51'W

DYESS AFB (KDYS)

Amtd 3 10NOV16

# ILS or LOC W RWY 16

SC-2, 03 OCT 2024 to 31 OCT 2024

SC-2, 03 OCT 2024 to 31 OCT 2024

FAF to MAP 3.2 NM					
Knots	60	90	120	150	180
Min:Sec	3:12	2:08	1:36	1:17	1:04