

ABILENE, TEXAS

# VOR/DME RWY 34

VOR/DME TQA <b>111.6</b> Chan <b>53</b>	APCH CRS <b>340°</b>	Rwy Ldg <b>13,500</b> TDZE <b>1788</b> Arprt Elev <b>1790</b>
---	-------------------------	---

AL-2 [USAF]

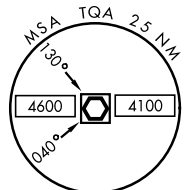
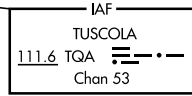
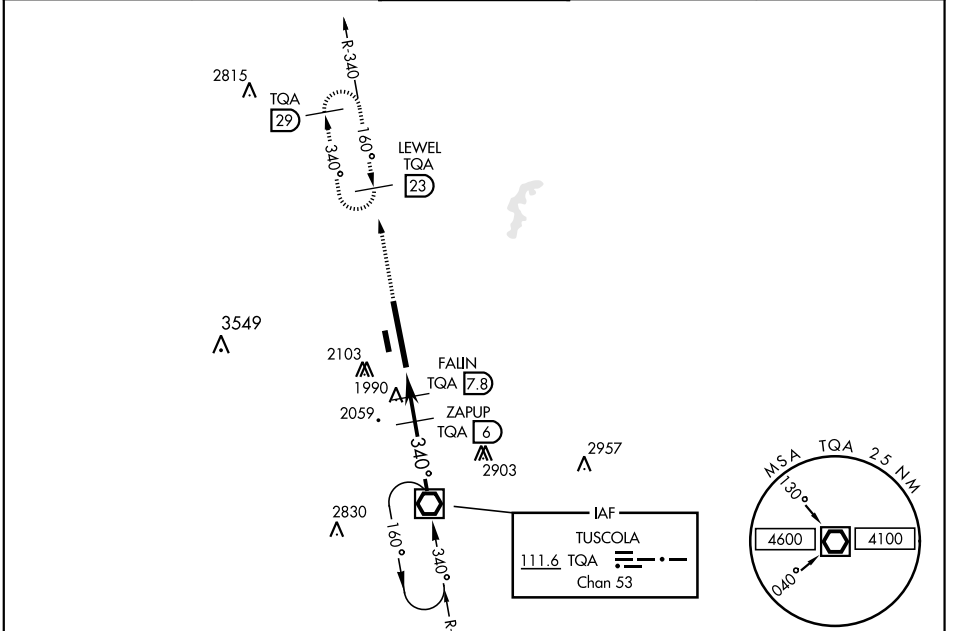
DYESS AFB (KDYS)

\* When ALS inop, increase CAT AB RVR to 55 and vis to 1 mile, CAT CDE RVR vis to 1 3/8 miles.  
 \*\* Circling to other than Rwy 16 NA

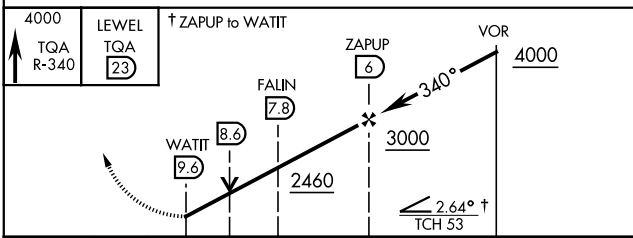


MISSED APPROACH: Climb to 4000 via TQA VOR/DME R-340 to LEWEL and hold.

ATIS ★ <b>269.175</b>	ABILENE APP CON <b>125.0 338.3</b> EAST <b>127.2 282.3</b> WEST	DYESS TOWER <b>133.0 257.675</b>	GND CON <b>118.35 275.8</b>	ASR
--------------------------	---	-------------------------------------	--------------------------------	-----



EMERG SAFE ALT 100 NM 4600



ELEV 1790	TDZE 1788
1926 (A1) 91 (P)	1867 (A)
ASSAULT STRIP	TWR 1924 (A) 1906 (★)
1904 (M)	1962 (★)
1985 (M)	34 (A1)
ASSAULT STRIP	
LIRL Rwy 164°-344°	340° 4.1 NM from FAF
HIRL Rwy 16-34	
FAF to MAP 3.6 NM	
Knots	60 90 120 150 180
Min:Sec	3:36 2:24 1:48 1:26 1:12

ABILENE, TEXAS

32°25' -99°51'W

DYESS AFB (KDYS)

Amdt 3 10NOV16

# VOR/DME RWY 34

SC-2, 03 OCT 2024 to 31 OCT 2024

SC-2, 03 OCT 2024 to 31 OCT 2024