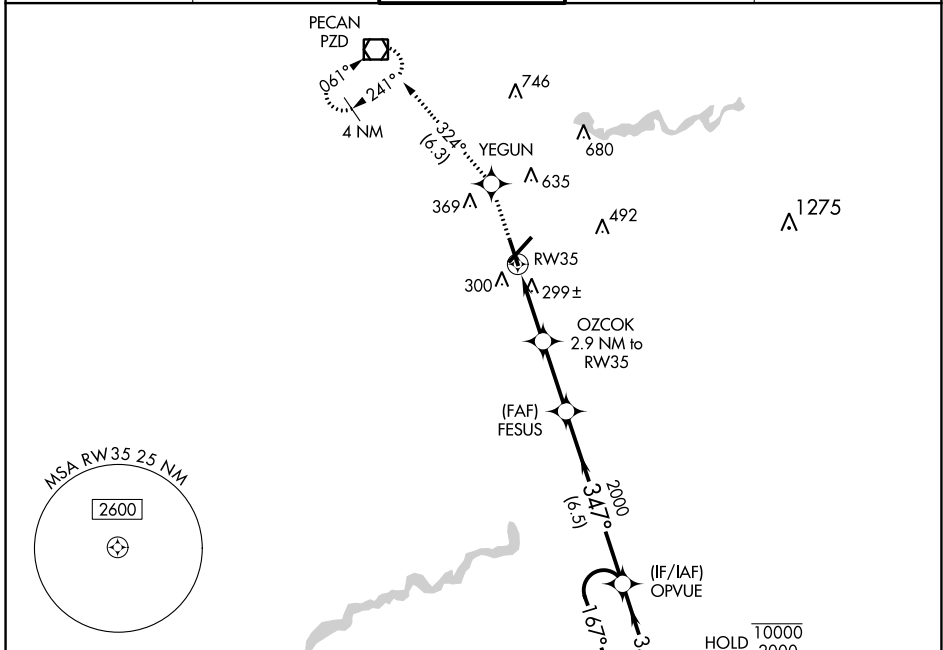


WAAS CH <b>97415</b> <b>W35A</b>	APP CRS <b>347°</b>	Rwy Idg <b>5219</b> TDZE <b>196</b> Apt Elev <b>196</b>
--	------------------------	---

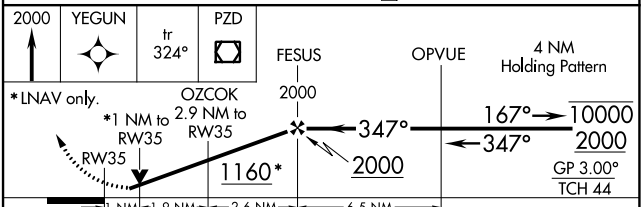
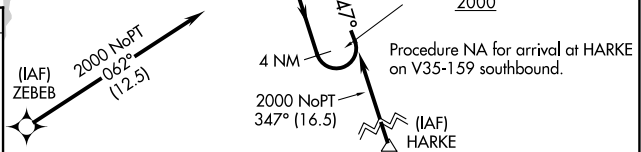
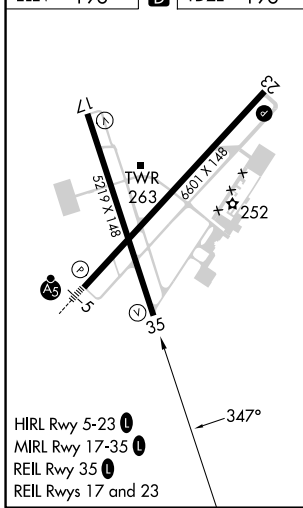
# RNAV (GPS) RWY 35

SOUTHWEST GEORGIA RGNL (ABY)

RNP APCH.		MISSED APPROACH: Climb to 2000 direct YEGUN and on track 324° to PZD VOR/DME and hold.		
<p>▼ For uncompensated Baro-VNAV systems, LNAV/VNAV NA below -7°C or above 54°C. Rwy 35 helicopter visibility reduction below ¼ SM NA.</p>				
ATIS <b>133.05</b>	JACKSONVILLE CENTER <b>125.75 363.075</b>	ALBANY TOWER * <b>120.25 (CTAF) 0336.4</b>	GND CON <b>121.9 348.6</b>	UNICOM <b>122.95</b>



ELEV 196	<b>D</b> TDZE 196
----------	-------------------



2000	YEGUN	tr 324°	PZD	FESUS	OPVUE	4 NM Holding Pattern
*LNAV only.						
*1 NM to RW35		OZCOK 2.9 NM to RW35		167° → 10000		
1160*				← 347°		2000
GP 3.00°				TCH 44		
CATEGORY	A	B	C	D		
LPV DA	495-1 299 (300-1)					
LNAV/VNAV DA	475-1 279 (300-1)					
LNAV MDA	560-1 364 (400-1)					
<b>C</b> CIRCLING	640-1 444 (500-1)	660-1 464 (500-1)	940-2¼ 744 (800-2¼)	940-2½ 744 (800-2½)		

SE-4, 03 OCT 2024 to 31 OCT 2024

SE-4, 03 OCT 2024 to 31 OCT 2024