

ALBANY, GEORGIA

AL-8 (FAA)

23334

WAAS CH <b>78000</b> W05A	APP CRS <b>047°</b>	Rwy Idg <b>6601</b> TDZE <b>196</b> Apt Elev <b>196</b>
---------------------------------	------------------------	---

# RNAV (GPS) RWY 5

SOUTHWEST GEORGIA RGNL (A.B.Y)

RNP APCH.

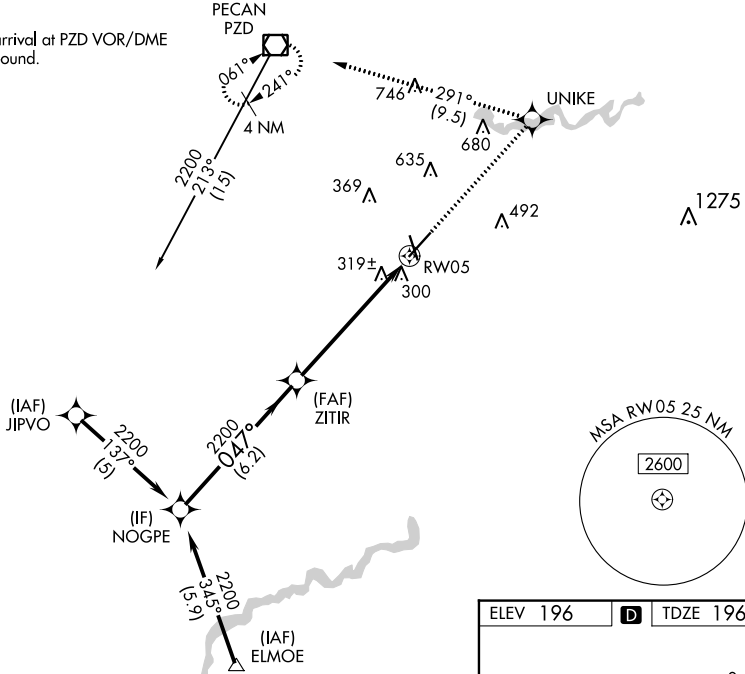
▼ For uncompensated Baro-VNAV systems, LNAV/VNAV NA below -7°C or above 54°C. For inop ALS, increase LNAV Cat D visibility to RVR 6000.  
 ▲ \*\* RVR 1800 authorized with use of FD or AP or HUD to DA.



MISSED APPROACH: Climb to 2000 direct UNIKE and left turn on track 291° to PZD VOR/DME and hold.

ATIS <b>133.05</b>	JACKSONVILLE CENTER <b>125.75 363.075</b>	ALBANY TOWER * <b>120.25 (CTAF) 0336.4</b>	GND CON <b>121.9 348.6</b>	UNICOM <b>122.95</b>
-----------------------	--	---	-------------------------------	-------------------------

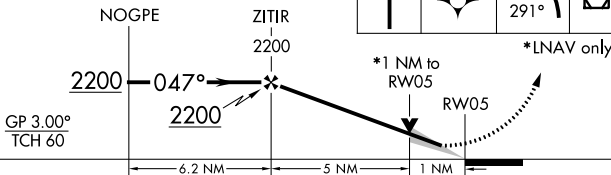
Procedure NA for arrival at PZD VOR/DME on V35-159 northbound.



SE-4, 03 OCT 2024 to 31 OCT 2024

SE-4, 03 OCT 2024 to 31 OCT 2024

VGSI and RNAV glidepath not coincident (VGSI Angle 3.00/TCH 55).



ELEV 196	D	TDZE 196
----------	---	----------

HIRL Rwy 5-23  
MIRL Rwy 17-35  
REIL Rwy 35  
REIL Rwy 17 and 23

CATEGORY	A	B	C	D
LPV DA**	396/24		200 (200-½)	
LNAV/VNAV DA	635/50		439 (500-1)	
LNAV MDA	580/24		384 (400-½)	
CIRCLING	640-1	660-1	940-2¼	940-2½
	444 (500-1)	464 (500-1)	744 (800-2¼)	744 (800-2½)

ALBANY, GEORGIA  
Amdt 1D 26MAR20

31°32'N-84°12'W

SOUTHWEST GEORGIA RGNL (A.B.Y)  
**RNAV (GPS) RWY 5**