

LOC I-ERJ <b>110.1</b>	APP CRS <b>141°</b>	Rwy Idg <b>9352</b> TDZE <b>85</b> Apt Elev <b>89</b>
---------------------------	------------------------	---

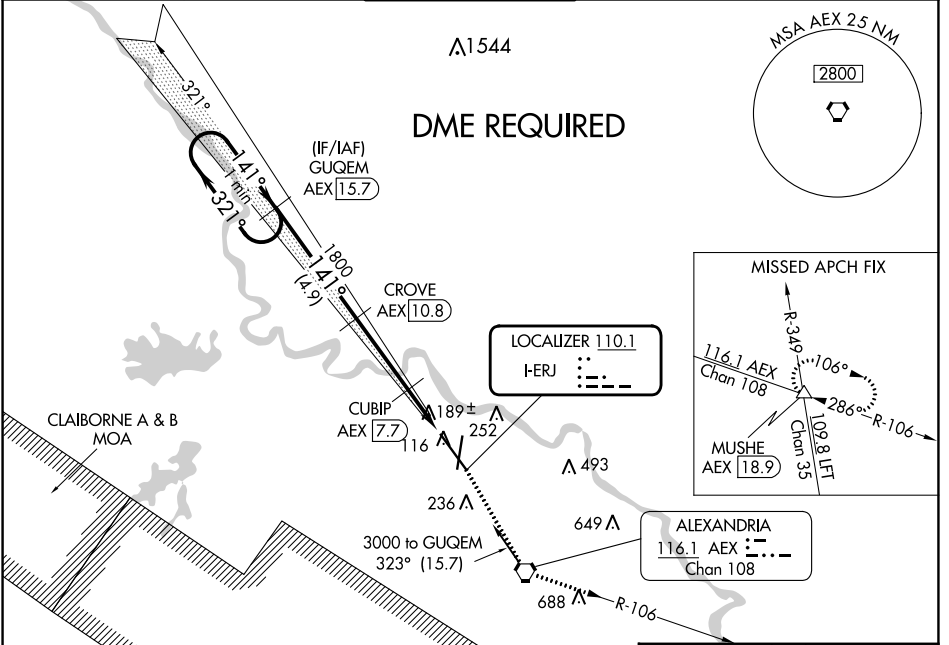
# ILS or LOC RWY 14

ALEXANDRIA INTL (AEX)

**⚠** DME from AEX VORTAC. Simultaneous reception of I-ERJ and AEX DME required. When R-3801 B active, RADAR and DME required. DME required.

**MALSR** MISSED APPROACH: Climb to 4000 direct AEX VORTAC and on AEX VORTAC R-106 to MUSHE INT/18.9 DME and hold.

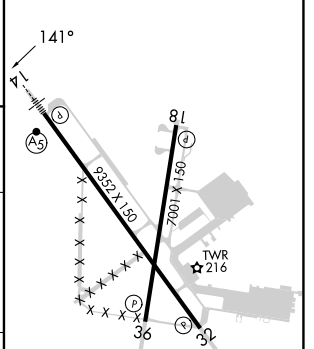
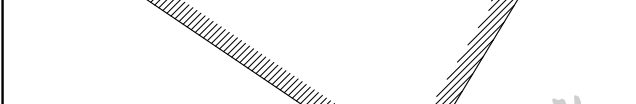
ASOS <b>123.975</b>	POLK APP CON <b>125.4 254.8</b>	ALEXANDRIA TOWER <b>127.35 (CTAF) 269.2</b>	GND CON <b>121.9 372.0</b>	CLNC DEL <b>121.9</b>
------------------------	------------------------------------	--	-------------------------------	--------------------------



SC-4, 03 OCT 2024 to 31 OCT 2024

SC-4, 03 OCT 2024 to 31 OCT 2024

ELEV 89	<b>D</b>	TDZE 85
---------	----------	---------



One Minute Holding Pattern	GUGEM AEX 15.7	4000 AEX	MUSHE AEX R-106
3000	141°	321°	*LOC only.
GS 3.00° TCH 56	1800	780	
VGSI and ILS glidepath not coincident (VGSI Angle 3.00/TCH 71).	4.9 NM	3.1 NM	2 NM
CATEGORY	A	B	C
S-ILS 14		346/24	261 (300-½)
S-LOC 14		460/24	375 (400-¾)
CIRCLING	540-1 451 (500-1)	560-1 471 (500-1)	700-1¾ 611 (700-1¾)
			860-2½ 771 (800-2½)

TDZL Rwy 14  
REIL Rws 18, 32 and 36  
HIRL Rws 18-36 and 14-32