

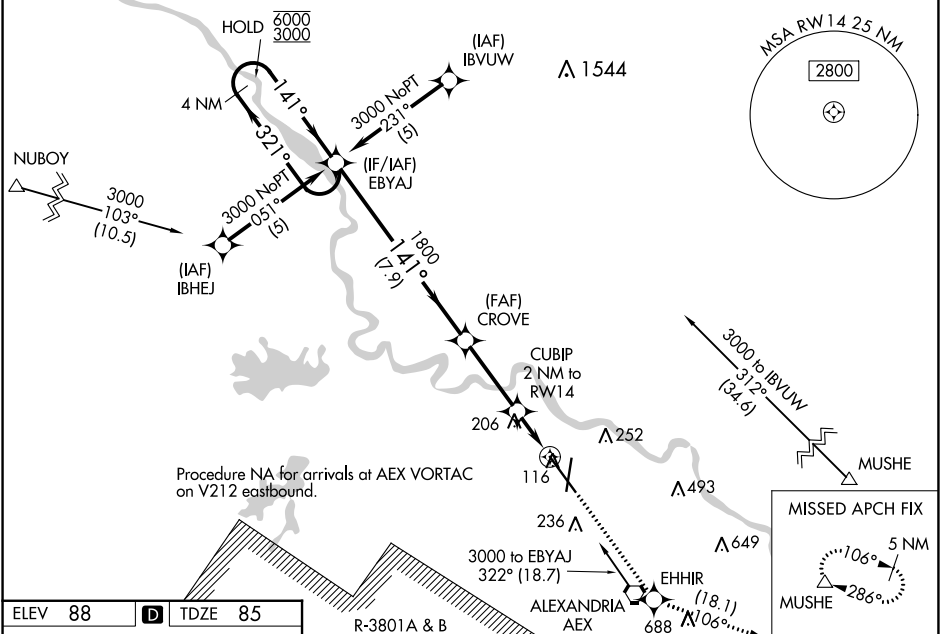
WAAS CH <b>56417</b> <b>W14A</b>	APP CRS <b>141°</b>	Rwy Idg <b>9352</b> TDZE <b>85</b> Apr Elev <b>88</b>
--	------------------------	---

# RNAV (GPS) RWY 14

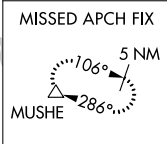
ALEXANDRIA INTL (AEX)

RNP APCH - GPS	MALSR 	MISSED APPROACH: Climb to 4000 direct EHHIR and on track 106° to MUSHE and hold.
 For uncompensated Baro-VNAV systems, LNAV/VNAV NA below -15°C or above 48°C. For inop ALS increase LNAV Cat D visibility to RVR 6000. RADAR required when R-3801 A-B in use.		

ASOS <b>123.975</b>	POLK APP CON <b>125.4 254.8</b>	ALEXANDRIA TOWER <b>127.35</b> (CTAF) <b>269.2</b>	GND CON <b>121.9 372.0</b>	CLNC DEL <b>121.9</b>
------------------------	------------------------------------	---	-------------------------------	--------------------------

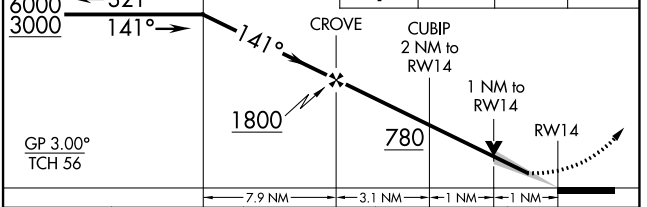
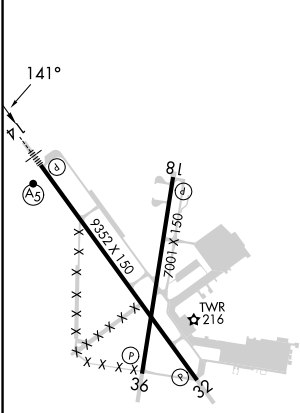


Procedure NA for arrivals at AEX VORTAC on V212 eastbound.



ELEV 88	<b>D</b>	TDZE 85
---------	----------	---------

R-3801A & B	VGSI and RNAV glidepath not coincident (VGSI Angle 3.00/TCH 71). 4 NM Holding Pattern EBYAJ	4000	EHHIR	tr 106°	MUSHE
-------------	--	------	-------	---------	-------



CATEGORY	A	B	C	D
LPV DA		346/24	261 (300-1/2)	
LNAV/VNAV DA		488/50	403 (400-1)	
LNAV MDA	480/24	395 (400-1/2)		480/50 395 (400-1)
<b>C</b> CIRCLING	540-1 452 (500-1)	560-1 472 (500-1)	700-1 3/4 612 (700-1 3/4)	860-2 1/2 772 (800-2 1/2)

TDZL Rwy 14  
REIL Rws 18, 32 and 36  
HIRL Rws 18-36 and 14-32

SC-4, 03 OCT 2024 to 31 OCT 2024

SC-4, 03 OCT 2024 to 31 OCT 2024