

WAAS CH <b>61200</b> <b>W18A</b>	APP CRS <b>186°</b>	Rwy Idg <b>7001</b> TDZE <b>84</b> Apt Elev <b>89</b>
--	------------------------	---

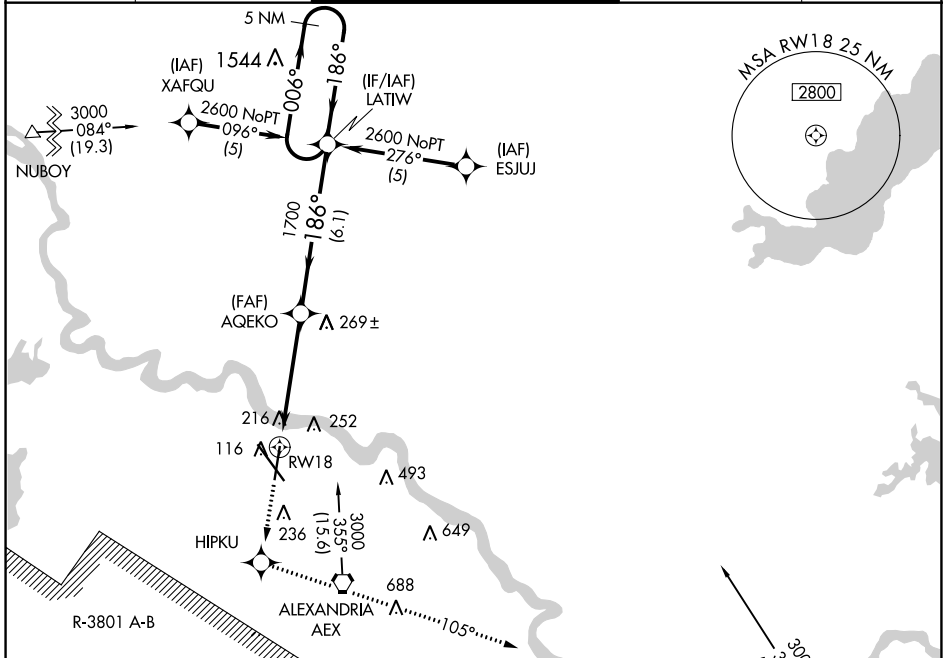
# RNAV (GPS) RWY 18

ALEXANDRIA INTL (AEX)

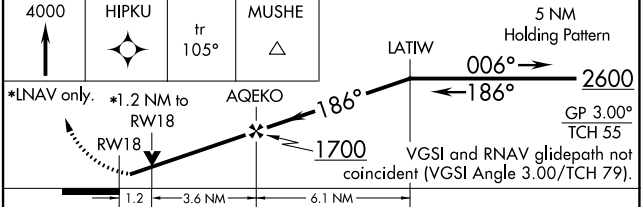
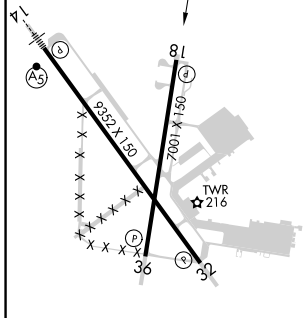
**▼** DME/DME RNP-0.3 NA. Radar required when R-3801 A-B in use. For uncompensated Baro-VNAV systems, LNAV/VNAV NA below -15°C (5°F) or above 48°C (119°F).  
**▲** Visibility reduction by helicopters NA.

**MISSED APPROACH:** Climb to 4000 direct HIPKU and via 105° track to MUSHE and hold.

ASOS <b>123.975</b>	POLK APP CON <b>125.4 254.8</b>	ALEXANDRIA TOWER <b>127.35 (CTAF) 269.2</b>	GND CON <b>121.9 372.0</b>	CLNC DEL <b>121.9</b>
------------------------	------------------------------------	--	-------------------------------	--------------------------



ELEV 89	<b>D</b>	TDZE 84
---------	----------	---------



CATEGORY	A	B	C	D
LPV DA	395-1 311 (400-1)			
LNAV/ VNAV DA	539-1½ 455 (500-1½)			
LNAV MDA	520-1	436 (500-1)	520-1¼ 436 (500-1¼)	520-1½ 436 (500-1½)
CIRCLING	540-1 451 (500-1)	560-1 471 (500-1)	700-1¾ 611 (700-1¾)	860-2½ 771 (800-2½)

TDZL Rwy 14  
REIL Rws 18, 32 and 36  
HIRL Rws 18-36 and 14-32

SC-4, 03 OCT 2024 to 31 OCT 2024

SC-4, 03 OCT 2024 to 31 OCT 2024