

LOC I-BXY 111.9	APP CRS 135°	Rwy ldg TDZE Apt Elev	5800 386 394
---------------------------	------------------------	-----------------------------	---

ILS or LOC RWY 13

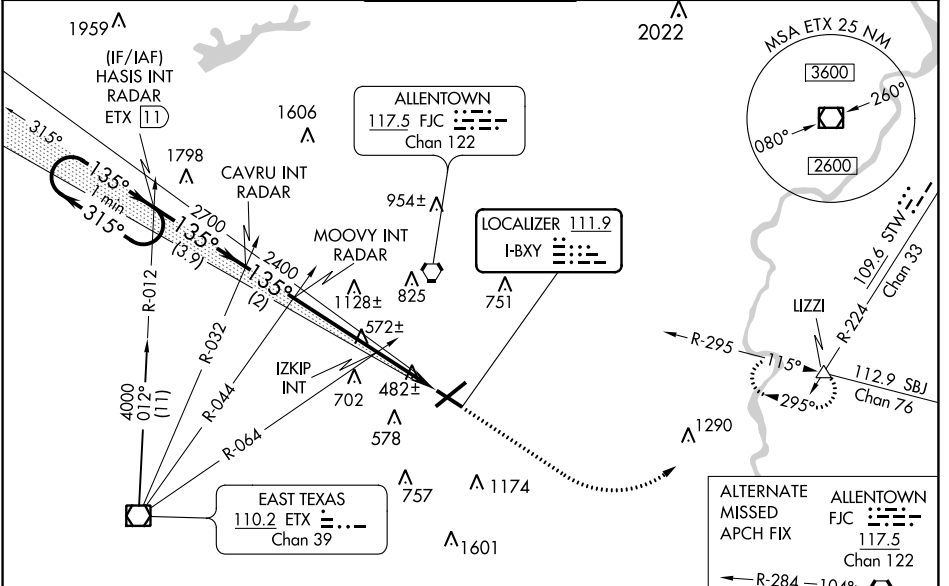
LEHIGH VALLEY INTL (ABE)

⚠ For inoperative MALSR, increase IZKIP fix minimums S-LOC 13 Cat C/D visibility to 1 mile.

MALSR
AS

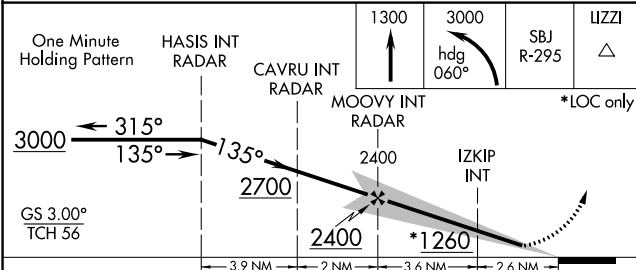
MISSED APPROACH: Climb to 3000 then climbing left turn to 3000 on heading 060° and on SBJ VOR/DME R-295 to IZZI INT and hold.

ATIS 126.975	ALLENTOWN APP CON 119.65 124.45 351.8	ALLENTOWN TOWER 120.5 257.95	GND CON 121.9 257.95	CLNC DEL 124.05 257.95
------------------------	---	--	--------------------------------	----------------------------------



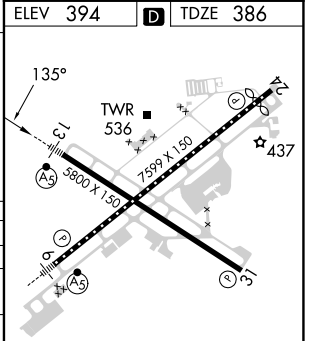
NE-4, 03 OCT 2024 to 31 OCT 2024

NE-4, 03 OCT 2024 to 31 OCT 2024



CATEGORY	A	B	C	D
S-ILS 13	586-½ 200 (200-½)			
S-LOC 13	1260-½ 874 (900-½)	1260-¾ 874 (900-¾)	1260-2	874 (900-2)
C CIRCLING	1260-1¼	866 (900-1¼)	1260-2½ 866 (900-2½)	1600-3 1206 (1300-3)
IZKIP FIX MINIMUMS (DUAL VOR RECEIVERS REQUIRED)				
S-LOC 13	740-½	354 (400-½)	740-⅝	354 (400-⅝)
C CIRCLING	840-1 446 (500-1)	900-1 506 (600-1)	1180-2¼ 786 (800-2¼)	1600-3 1206 (1300-3)

ELEV 394	D	TDZE 386
----------	----------	----------



REIL Rwy 24 and 31					
HIRL Rwy 6-24 and 13-31					
FAF to MAP 6.2 NM					
Knots	60	90	120	150	180
Min:Sec	6:12	4:08	3:06	2:29	2:04