

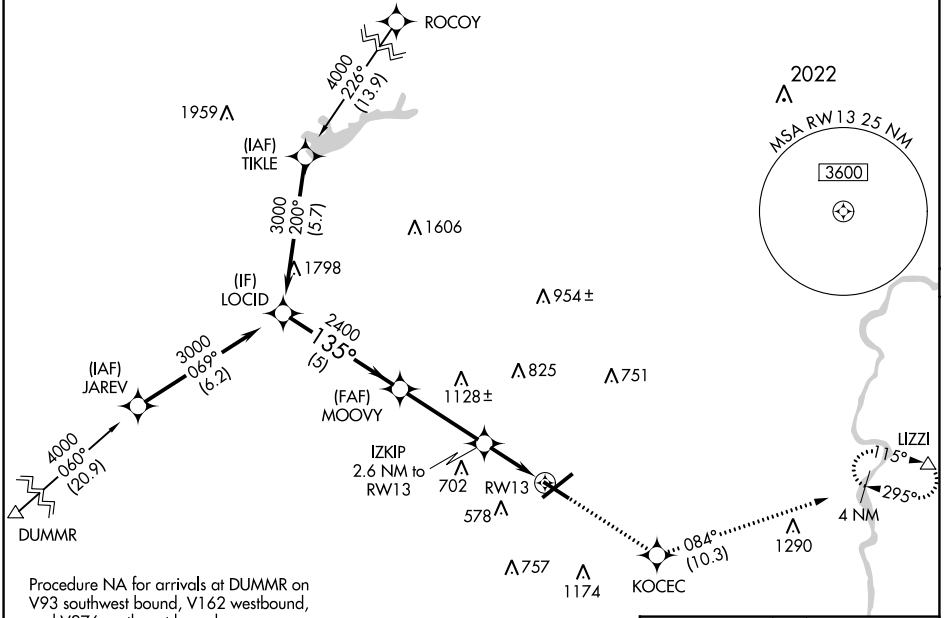
WAAS CH 82532 W13A	APP CRS 135°	Rwy Idg TDZE 386 Apt Elev 394	5800
--	------------------------	---	-------------

RNAV (GPS) RWY 13

LEHIGH VALLEY INTL (ABE)

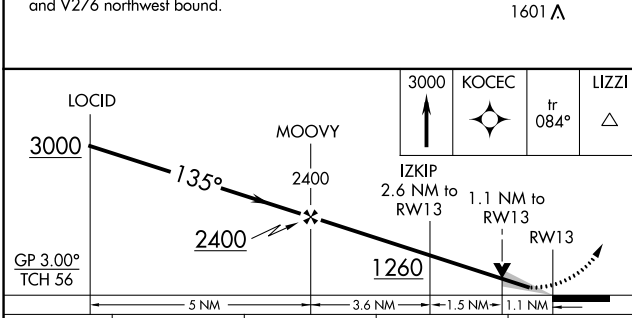
RNP APCH - GPS.		MALSR 	MISSED APPROACH: Climb to 3000 direct KOCEC and on track 084° to LIZZI and hold.
 For uncompensated Baro-VNAV systems, LNAV/VNAV NA below -16°C or above 54°C. For inop ALS, increase LNAV Cat C/D visibility to 1½ SM.			

ATIS 126.975	ALLENTOWN APP CON 119.65 124.45 351.8	ALLENTOWN TOWER 120.5 257.95	GND CON 121.9 257.95	CLNC DEL 124.05 257.95
------------------------	---	--	--------------------------------	----------------------------------



NE-4, 03 OCT 2024 to 31 OCT 2024

NE-4, 03 OCT 2024 to 31 OCT 2024



ELEV 394	D	TDZE 386
----------	----------	----------

CATEGORY	A	B	C	D
LPV DA		586-½ 200 (200-½)		
LNAV/VNAV DA		700-½ 314 (400-½)		
LNAV MDA	800-½ 414 (500-½)		800-¾ 414 (500-¾)	
C CIRCLING	900-1 506 (600-1)		1180-2¼ 786 (800-2¼)	1600-3 1206 (1300-3)

