

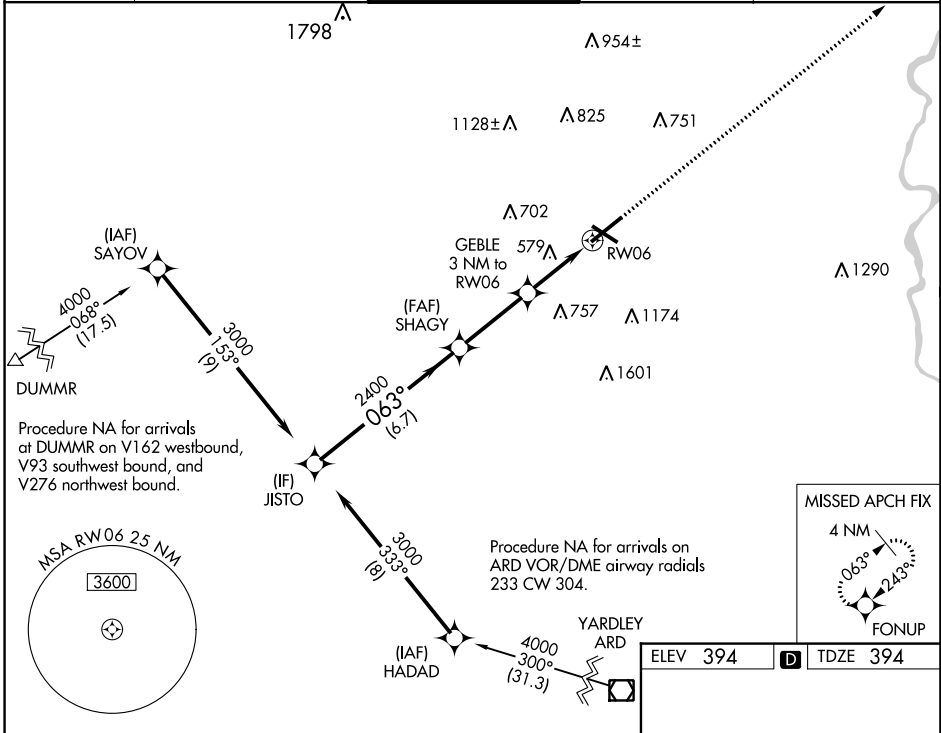
WAAS CH 69432 W06A	APP CRS 063°	Rwy Idg TDZE 394 Apt Elev 394	7599
--	------------------------	---	-------------

RNAV (GPS) RWY 6

LEHIGH VALLEY INTL (ABE)

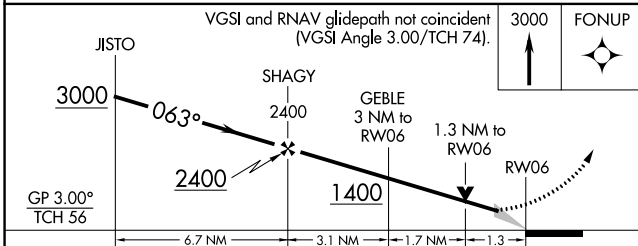
RNP APCH - GPS	<p>▼ For uncompensated Baro-VNAV systems, LNAV/VNAV NA below -8°C or above 54°C. For inop ALS, increase LNAV Cat C/D visibility to 1½ SM. ▲ **RVR 1800 authorized with use of FD or AP or HUD to DA.</p>	MALSR 	MISSED APPROACH: Climb to 3000 direct FONUP and hold.
----------------	---	-----------	---

ATIS 126.975	ALLENTOWN APP CON 119.65 124.45 351.8	ALLENTOWN TOWER 120.5 257.95	GND CON 121.9 257.95	CLNC DEL 124.05 257.95
------------------------	---	--	--------------------------------	----------------------------------



NE-4, 03 OCT 2024 to 31 OCT 2024

NE-4, 03 OCT 2024 to 31 OCT 2024



ELEV 394	D TDZE 394
----------	-------------------

CATEGORY	A	B	C	D
LPV DA **	594/24		200 (200-½)	
LNAV/ DA VNAV	644/24		250 (300-½)	
LNAV MDA	840/24	446 (500-½)	840/45	446 (500-¾)
C CIRCLING	900-1	506 (600-1)	1180-2¼ 786 (800-2¼)	1600-3 1206 (1300-3)

