

LOC/DME I-HFW 109.3 Chan 30	APP CRS 095°	Rwy Idg 8800 TDZE 1015 Apt Elev 1026
---	------------------------	---

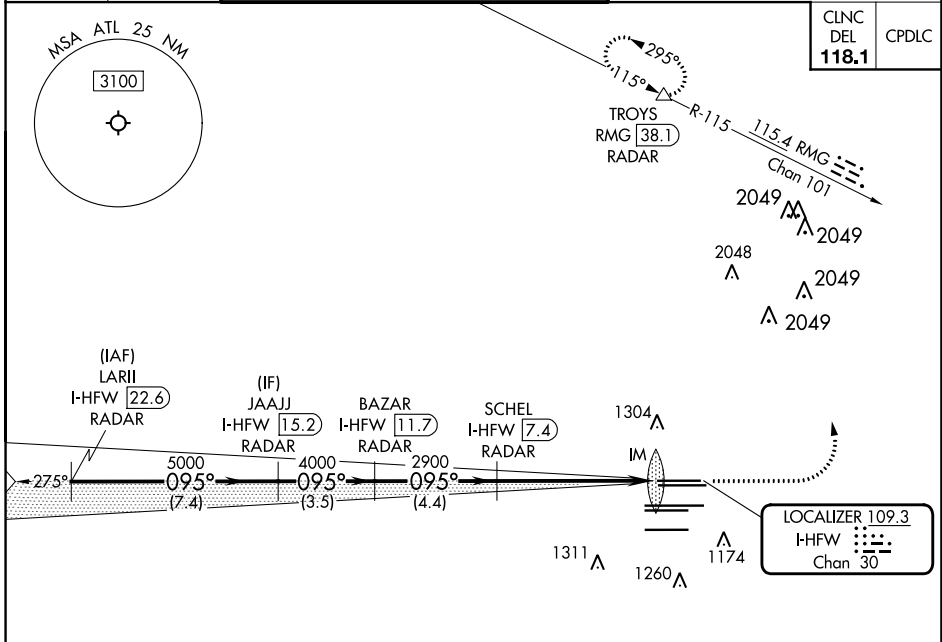
ILS RWY 8L (CAT II & III)

HARTSFIELD-JACKSON ATLANTA INTL (ATL)

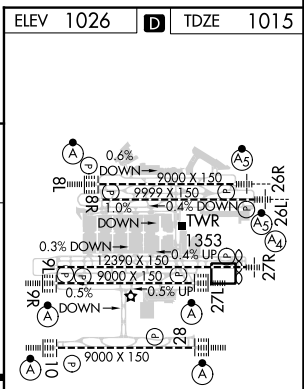
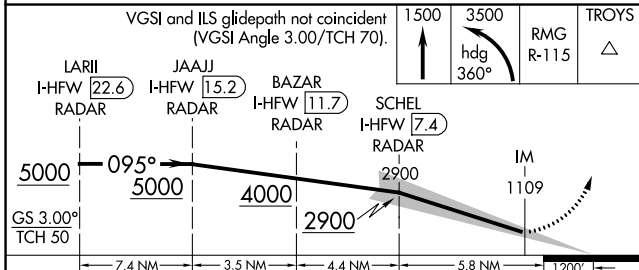
RADAR required for procedure entry. DME or RADAR required. **ALSIF-2** MISSED APPROACH: Climb to 1500 then climbing left turn to 3500 on heading 360° and RMG VORTAC R-115 to TROYS/RMG 38.1 DME/RADAR and hold.

Simultaneous approach authorized.

D-ATIS ARR 119.65	ATLANTA APP CON 127.9 379.9	ATLANTA TOWER 8L-26R 8R-26L 9L-27R 9R-27L 10-28 RWYWS				ALL RWYWS (8L-26R,8R-26L) (9L-27R,9R-27L) 10-28	GND CON ALL RWYWS			
DEP 125.55	127.9 379.9	119.1	125.325	123.85	119.3	119.5 254.4	121.9	121.75	121.65	254.4



ELEV 1026	TDZE 1015
-----------	-----------



CATEGORY	A	B	C	D
S-ILS 8L	CAT II RA 105/12 100 DA 1115			
S-ILS 8L	CAT III RVR 06			

CATEGORY II & III ILS SPECIAL AIRCREW & AIRCRAFT CERTIFICATION REQUIRED

HIRL all RwyS
TDZ/CL RwyS 8L, 9R, 10, 26R, 27L and 28

SE-4, 03 OCT 2024 to 31 OCT 2024

SE-4, 03 OCT 2024 to 31 OCT 2024