

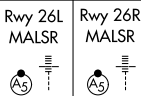
LOC/DME I-BRU 108.7 Chan 24	APP CRS 275°	Rwy Idg TDZE Apt Elev	26L 9999 996 1026	26R 8500 990 1026
--	------------------------	-----------------------------	---	---

ILS or LOC RWY 26L

HARTSFIELD-JACKSON ATLANTA INTL (ATL)

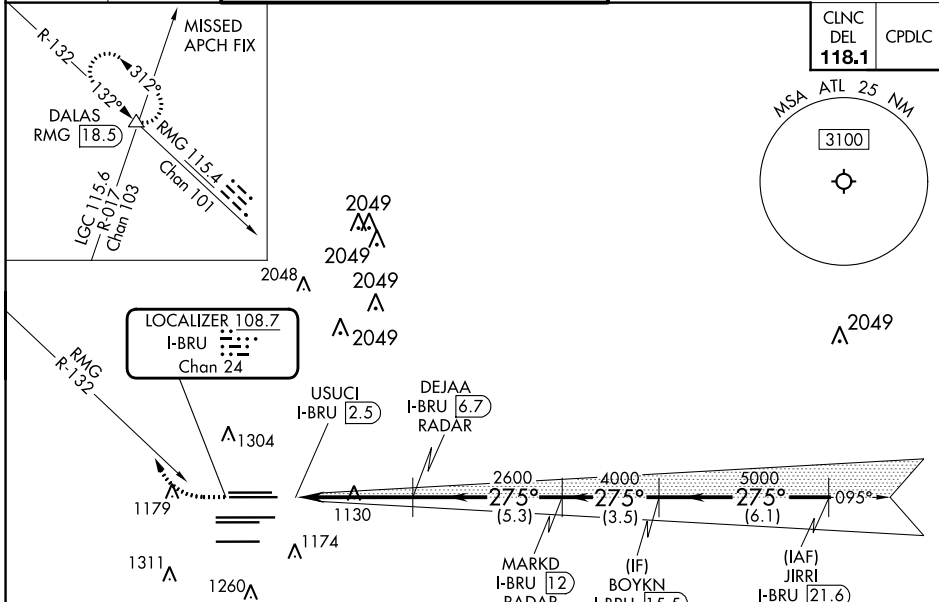
RADAR required.

▼ Inop table does not apply to sidestep Rwy 26R Cats A and B. For inop ALS, increase S-ILS 26L all Cats visibility to RVR 4500 and S-LOC 26L Cat E visibility to RVR 6000. For inop ALS to Rwy 26R, increase sidestep 26R Cat E visibility to 2 SM. Simultaneous approach authorized.

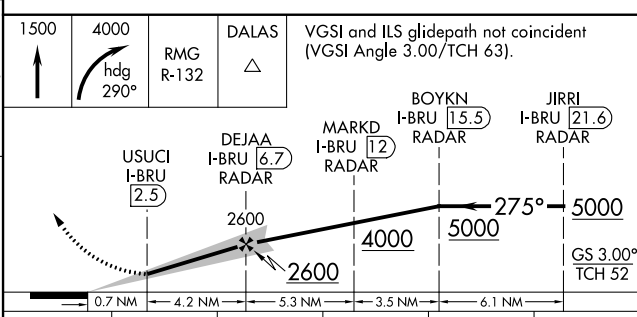
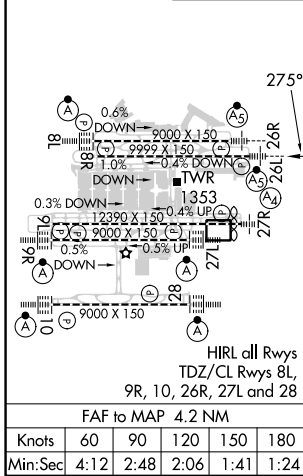


MISSED APPROACH: Climb to 1500 then climbing right turn to 4000 on heading 290° and RMG R-132 to DALAS INT/RMG VORTAC 18.5 DME and hold.

D-ATIS ARR 119.65	ATLANTA APP CON DEP 127.9	ATLANTA TOWER 8L-26R 8R-26L 9L-27R 9R-27L 10-28 RWYS 119.1 125.325 123.85 119.3 119.5 254.4				ALL RWYS 121.9	GND CON (8L-26R,8R-26L) (9L-27R,9R-27L) 10-28 121.75	ALL RWYS 254.4
-----------------------------	--	--	--	--	--	-----------------------------	---	-----------------------------



ELEV 1026	D	TDZE 26L 996	TDZE 26R 990
-----------	----------	--------------	--------------



CATEGORY	A	B	C	D	E
S-ILS 26L	1280/24 284 (300-1/2)				
S-LOC 26L	1380/24	384 (400-1/2)	1380/35	384 (400-3/4)	
SIDESTEP 26R	1380/55 390 (400-1)			1380-1 1/2 390 (400-1 1/2)	

SE-4, 03 OCT 2024 to 31 OCT 2024

SE-4, 03 OCT 2024 to 31 OCT 2024