

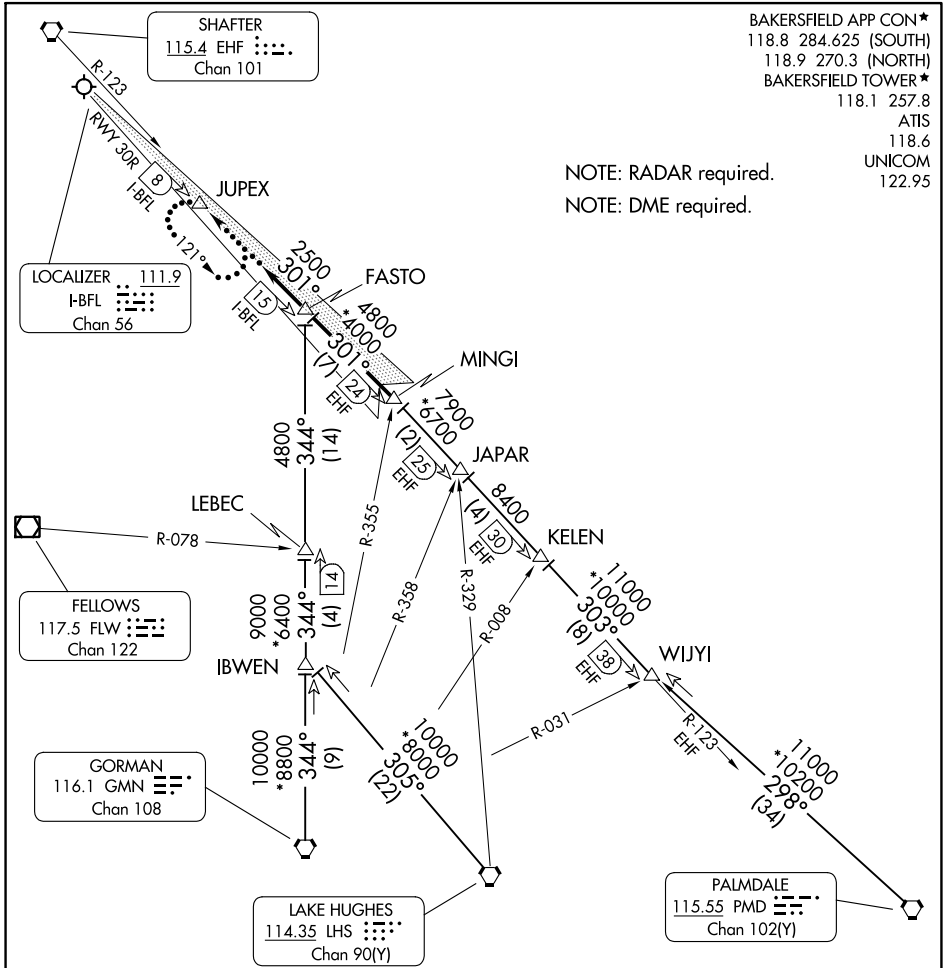
FASTO TWO ARRIVAL

AL-36 (FAA)

MEADOWS FLD (BFL)
BAKERSFIELD, CALIFORNIA

BAKERSFIELD APP CON*
 118.8 284.625 (SOUTH)
 118.9 270.3 (NORTH)
 BAKERSFIELD TOWER*
 118.1 257.8
 ATIS
 118.6
 UNICOM
 122.95

NOTE: RADAR required.
 NOTE: DME required.



SW-3, 03 OCT 2024 to 31 OCT 2024

SW-3, 03 OCT 2024 to 31 OCT 2024

NOTE: Chart not to scale.

ARRIVAL ROUTE DESCRIPTION

GORMAN TRANSITION (GMN.FASTO2): From over GMN VORTAC on GMN R-344 to FASTO INT. Thence

LAKE HUGHES TRANSITION (LHS.FASTO2): From over LHS VORTAC on LHS R-305 and GMN R-344 to FASTO INT. Thence

PALMDALE TRANSITION (PMD.FASTO2): From over PMD VORTAC on PMD R-298 and EHF R-123 to MINGI INT, then on I-BFL LOC course to FASTO INT. Thence

. . . . From over FASTO INT on the I-BFL Localizer for the ILS or LOC RWY 30R procedure.

LOST COMMUNICATIONS: From FASTO INT direct to JUPEX INT maintain 2500; intercept and execute ILS or LOC RWY 30R approach. If unable, proceed to JUPEX INT and hold and maintain 2500.

FASTO TWO ARRIVAL