

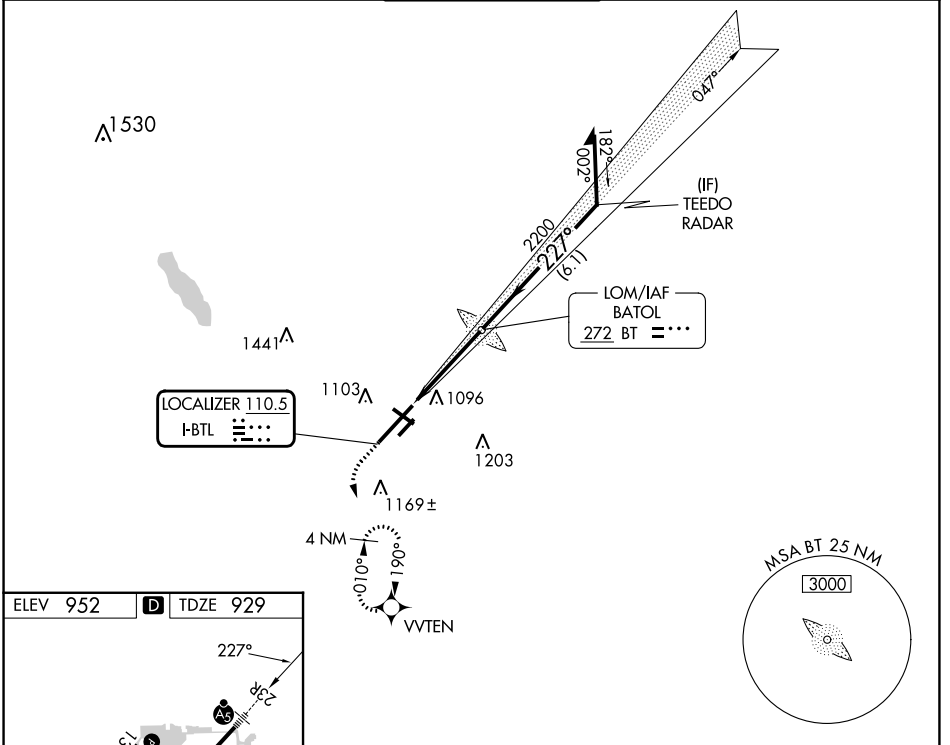
LOC I-BTL 110.5	APP CRS 227°	Rwy Idg 10004 TDZE 929 Apt Elev 952
---------------------------	------------------------	--

ILS or LOC RWY 23R

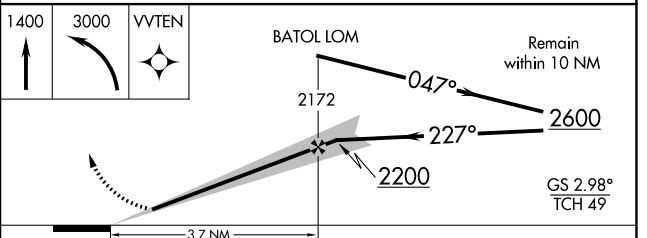
BATTLE CREEK EXEC AT KELLOGG FLD (BTL)

ADF required. RADAR required for procedure entry. RNP APCH - GPS.		MALSR 	MISSED APPROACH: Climb to 1400 then climbing left turn to 3000 direct VVTEN and hold, continue climb-in-hold to 3000.
<p>⚠ Circling NA to Rwys 5R and 23L. Circling Rwy 31 NA at night. For inop ALS increase S-LOC 23R Cat C/D visibility to 1 3/8 SM. * RVR 1800 authorized with use of FD or AP or HUD to DA (NA when using Grand Rapids altimeter setting).</p>			

ATIS 128.325	GREAT LAKES APP CON* 119.2 239.25	BATTLE CREEK TOWER* 126.825 (CTAF)	GND CON 121.7	UNICOM 122.95
------------------------	---	--	-------------------------	-------------------------



ELEV 952	D TDZE 929
HIRL Rwy 5L-23R MIRL Rwy 13-31 and 5R-23L REIL Rwys 5L, 5R, 13, 23L and 31L	
FAF to MAP 3.7 NM	
Knots	60 90 120 150 180
Min:Sec	3:42 2:28 1:51 1:29 1:14



CATEGORY	A	B	C	D
S-ILS 23R*	1129/24		200 (200-1/2)	
S-LOC 23R	1400/24	471 (500-1/2)	1400/50	471 (500-1)
C CIRCLING	1420-1 468 (500-1)	1480-1 528 (600-1)	1520-1 1/2 568 (600-1 1/2)	1520-2 568 (600-2)

EC-1, 03 OCT 2024 to 31 OCT 2024

EC-1, 03 OCT 2024 to 31 OCT 2024