

APP CRS Rwy Idg **4835**
 TDZE **930**
 Apt Elev **952**

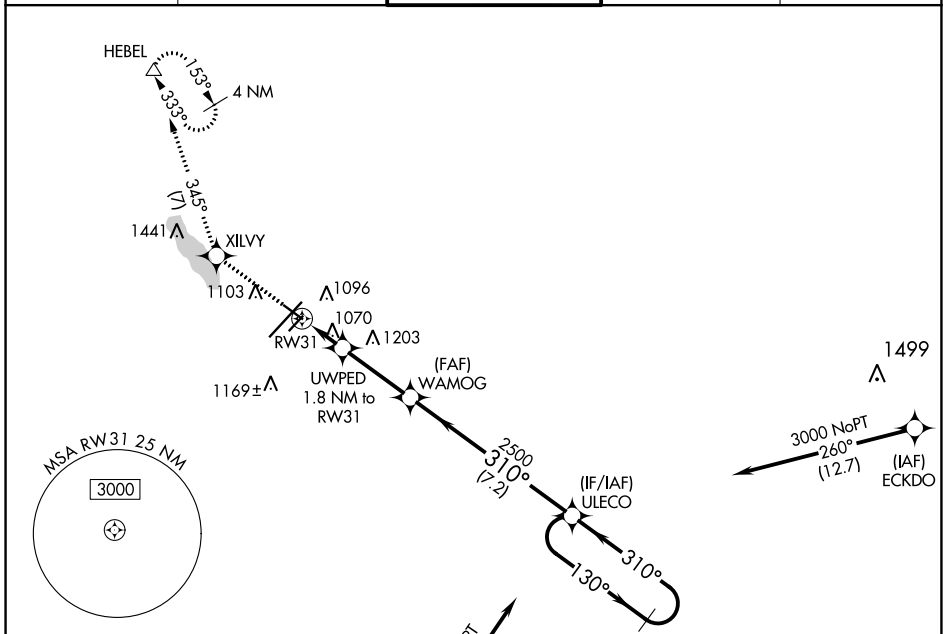
RNAV (GPS) RWY 31

BATTLE CREEK EXEC AT KELLOGG FLD (BTL)

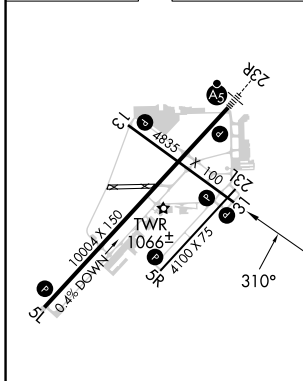
RNP APCH. MISSED APPROACH: Climb to 3000 direct XILVY and on 345° track to HEBEL and hold.

▼ Circling NA to Rwys 5R and 23L. Rwy 31 helicopter visibility reduction below 1 SM NA. Procedure NA at night.

ATIS 128.325	GREAT LAKES APP CON★ 119.2 239.25	BATTLE CREEK TOWER★ 126.825 (CTAF)	GND CON 121.7	UNICOM 122.95
------------------------	---	--	-------------------------	-------------------------



ELEV 952 D TDZE 930



3000	XILVY	tr 345°	HEBEL	4 NM Holding Pattern
UWPED 1.8 NM to RW31	WAMOG	3.00 TCH 40	2500	ULECO 310°
RW31 1540	7.2 NM	310°	3000	4 NM Holding Pattern
VGSi and descent angles not coincident (VGSi Angle 3.00/TCH 25).				

CATEGORY	A	B	C	D
LNAV MDA	1320-1	390 (400-1)	1320-1½	390 (400-1½)
<input checked="" type="checkbox"/> CIRCLING	1420-1 468 (500-1)	1480-1 528 (600-1)	1520-1½ 568 (600-1½)	1520-2 568 (600-2)

HIRL Rwy 5L-23L L
 MIRL Rwys 13-31 and 5R-23L L
 REIL Rwys 5L, 5R, 13, 23L and 31L L

EC-1, 03 OCT 2024 to 31 OCT 2024

EC-1, 03 OCT 2024 to 31 OCT 2024