

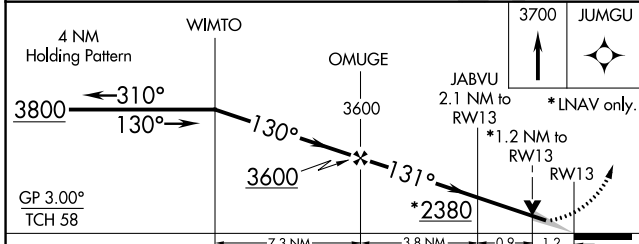
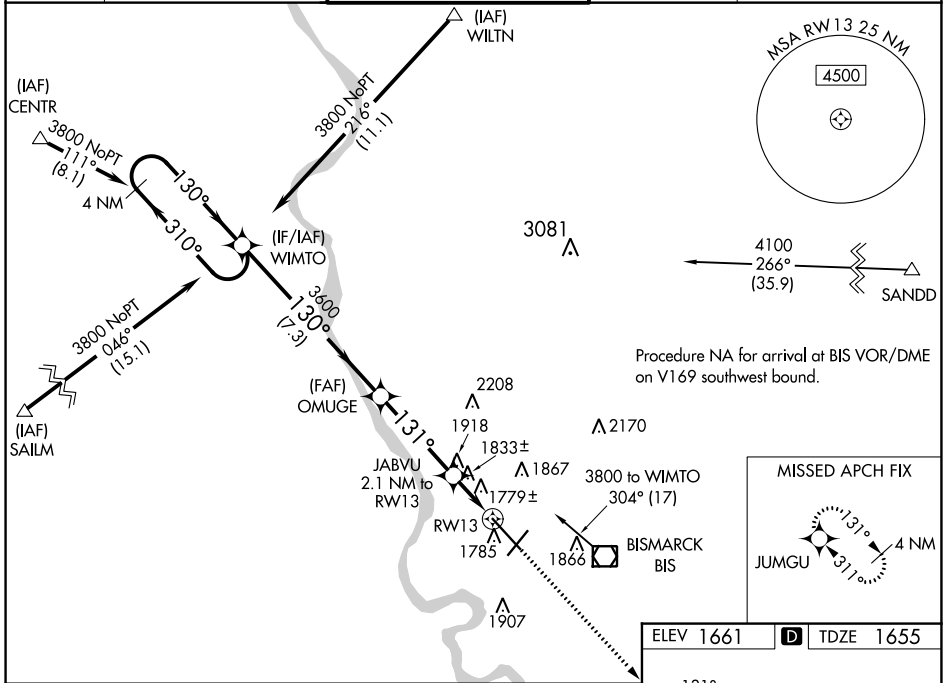
WAAS CH 86920 W13A	APP CRS 131°	Rwy Idg TDZE Apt Elev	8794 1655 1661
--	------------------------	-----------------------------	---

RNAV (GPS) RWY 13

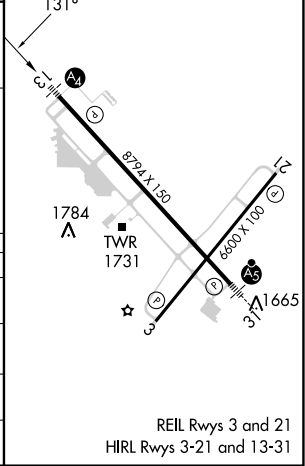
BISMARCK MUNI (BIS)

ASR	Inoperative table does not apply. For uncompensated Baro-VNAV systems, LNAV/VNAV NA below -18°C (0°F) or above 33°C (91°F). DME/DME RNP-0.3 NA.	MALS 	MISSED APPROACH: Climb to 3700 direct JUMGU and hold.
------------	---	----------	---

ATIS 119.35	BISMARCK APP CON * 126.3 298.9	BISMARCK TOWER * 118.3 (CTAF) 0 257.8	GND CON 121.9	UNICOM 122.95
-----------------------	--	---	-------------------------	-------------------------



ELEV 1661	D TDZE 1655
-----------	--------------------



CATEGORY	A	B	C	D
LPV DA	1855-3/4		200 (200-3/4)	
LNAV/VNAV DA	2083-1 3/8		428 (500-1 3/8)	
LNAV MDA	2100-1	445 (500-1)	2100-1 3/8	445 (500-1 3/8)
C CIRCLING	2200-1	539 (600-1)	2460-2 1/4	2460-2 1/2
			799 (800-2 1/4)	799 (800-2 1/2)

NC-1, 03 OCT 2024 to 31 OCT 2024

NC-1, 03 OCT 2024 to 31 OCT 2024

REIL Rws 3 and 21
HIRL Rws 3-21 and 13-31