

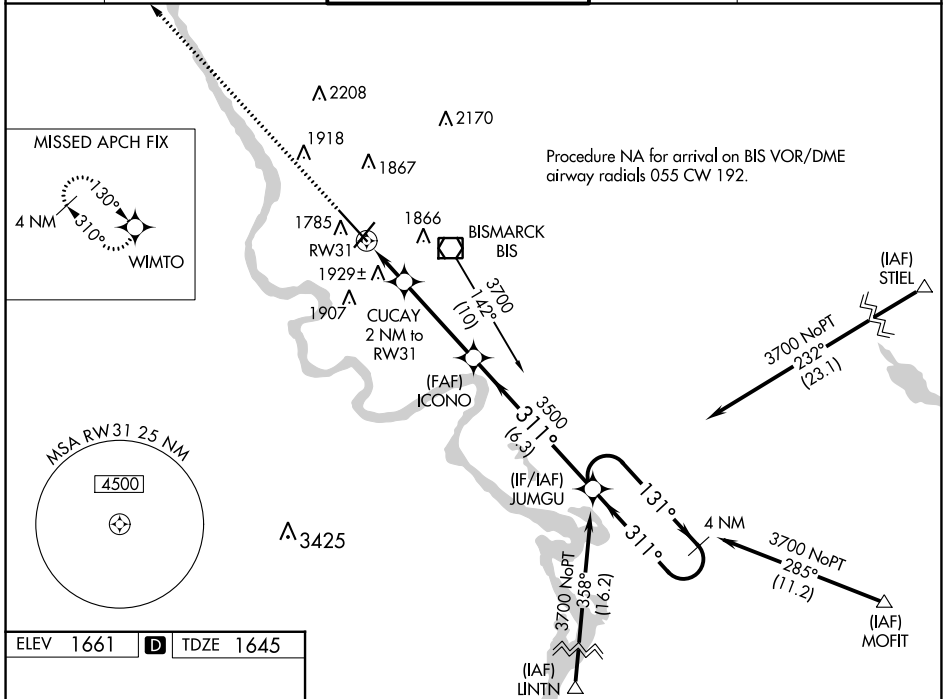
WAAS CH 56599 W31A	APP CRS 311°	Rwy Idg TDZE Apt Elev	8794 1645 1661
----------------------------------------	------------------------	-----------------------------	-------------------------------------------

RNAV (GPS) RWY 31

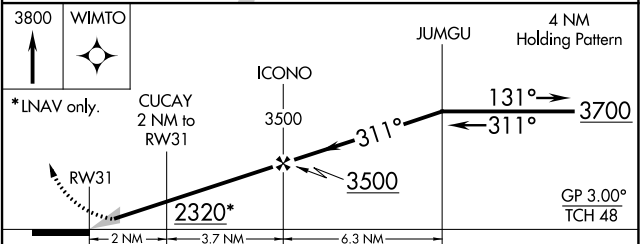
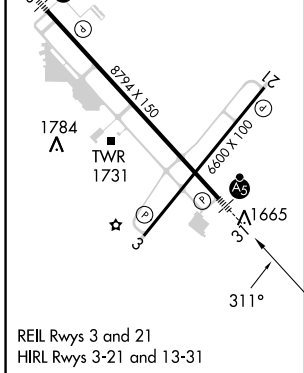
BISMARCK MUNI (BIS)

	For uncompensated Baro-VNAV systems, LNAV/VNAV NA below -18°C (0°F) or above 33°C (91°F). DME/DME RNP-0.3 NA. ** RVR 1800 authorized with use of FD or AP or HUD to DA.		MISSED APPROACH: Climb to 3800 direct WIMTO and hold.

ATIS 119.35	BISMARCK APP CON* 126.3 298.9	BISMARCK TOWER* 118.3 (CTAF) 0 257.8	GND CON 121.9	UNICOM 122.95
-----------------------	-----------------------------------------	------------------------------------------------	-------------------------	-------------------------



ELEV 1661	D	TDZE 1645
-----------	----------	-----------



CATEGORY	A	B	C	D
LPV DA	1845/24 200 (200-1/2)			
LNAV/VNAV DA	2269-1 3/4 624 (700-1 3/4)			
LNAV MDA	2180/24	535 (600-1/2)	2180/55	535 (600-1)
C CIRCLING	2200-1	539 (600-1)	2460-2 1/4 799 (800-2 1/4)	2460-2 1/2 799 (800-2 1/2)

NC-1, 03 OCT 2024 to 31 OCT 2024

NC-1, 03 OCT 2024 to 31 OCT 2024