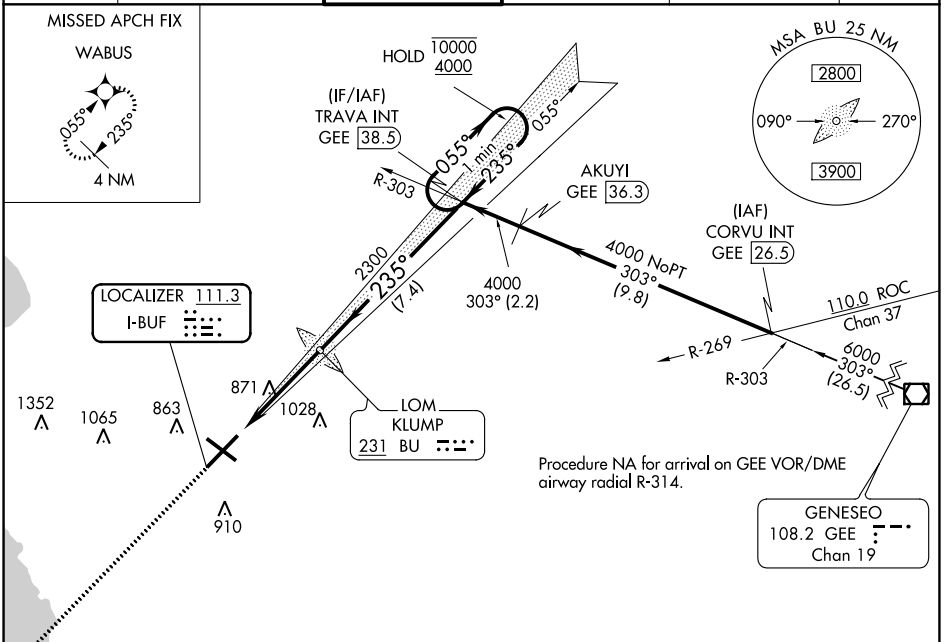


| | | |
|---------------------------|------------------------|--|
| LOC I-BUF 111.3 | APP CRS 235° | Rwy Idg TDZE Apt Elev 7569 726 727 |
|---------------------------|------------------------|--|

ILS RWY 23 (SA CAT I)

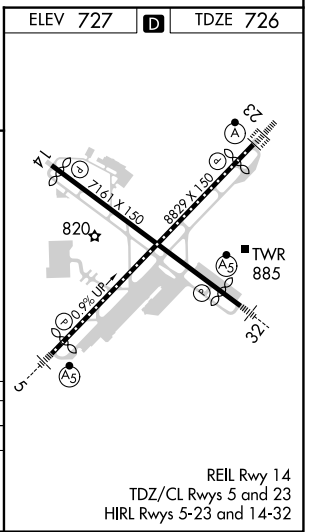
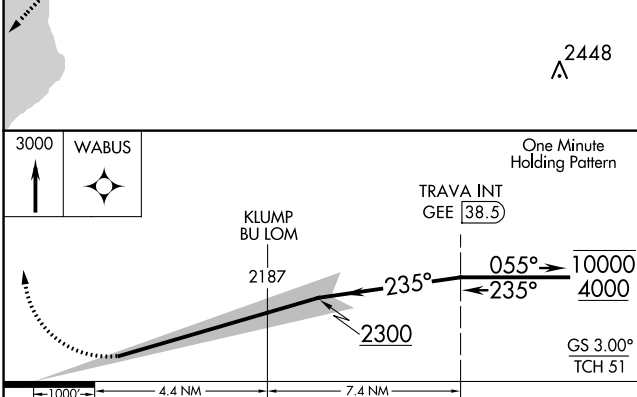
BUFFALO NIAGARA INTL (BUF)

| | | | | | |
|---|--|-------------------------------------|-------------------------------|---|-------|
| DME required. RNP APCH - GPS. | | ALSIF-2 | | MISSED APPROACH: Climb to 3000 direct WABUS and hold. | |
| Requires specific OPSPEC, MSPEC, or LOA approval. | | ALSIF-2 | | | |
| D-ATIS 135.35 | BUFFALO APP CON 126.15 263.125 | BUFFALO TOWER 120.5 257.8 | GND CON 133.2 257.8 | CLNC DEL 124.7 257.8 | CPDLC |



NE-2, 03 OCT 2024 to 31 OCT 2024

NE-2, 03 OCT 2024 to 31 OCT 2024



| | | | | |
|----------|-----------|---|------------|---|
| CATEGORY | A | B | C | D |
| S-ILS 23 | RA 194/14 | | 154 DA 880 | |

SA CATEGORY I ILS- SPECIAL AIRCREW & AIRCRAFT CERTIFICATION REQUIRED