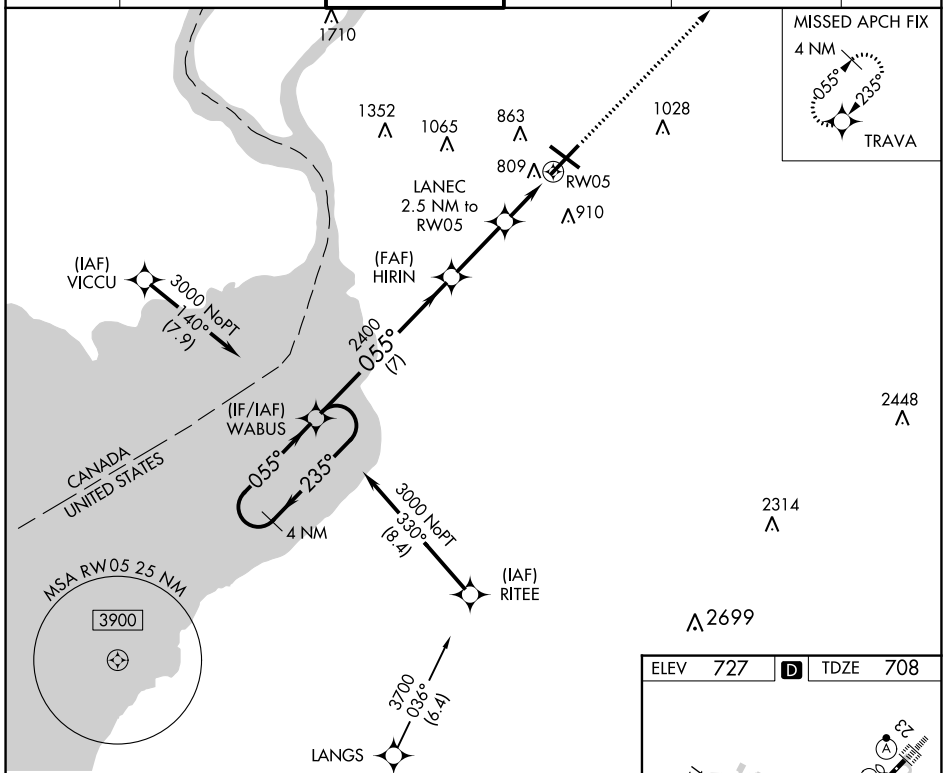


WAAS CH 70311 W05A	APP CRS 055°	Rwy Idg 7569 TDZE 708 Apt Elev 727
--	------------------------	---

RNAV (GPS) Y RWY 5

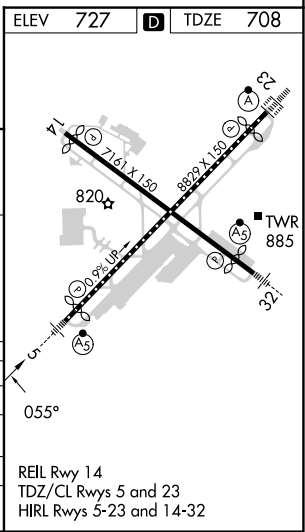
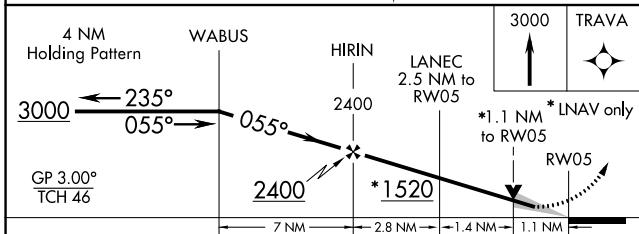
BUFFALO NIAGARA INTL (BUF)

RNP APCH - GPS		MALSRL	MISSED APPROACH: Climb to 3000 direct TRAVA and hold.		
For uncompensated Baro-VNAV systems, LNAV/VNAV NA below -17°C or above 54°C.					
D-ATIS 135.35	BUFFALO APP CON 126.15 263.125	BUFFALO TOWER 120.5 257.8	GND CON 133.2 257.8	CLNC DEL 124.7 257.8	CPDLC



NE-2, 03 OCT 2024 to 31 OCT 2024

NE-2, 03 OCT 2024 to 31 OCT 2024



CATEGORY	A	B	C	D
LPV DA		908/18	200 (200-½)	
LNAV/VNAV DA		997/24	289 (300-½)	
LNAV MDA	1060/24	352 (400-½)	1060/35	352 (400-¾)
CIRCLING	1200-1	473 (500-1)	1220-1½ 493 (500-1½)	1340-2 613 (700-2)

REIL Rwy 14
TDZ/CL Rwys 5 and 23
HIRL Rwys 5-23 and 14-32