

CHARLESTON, SOUTH CAROLINA

HI-VOR or TACAN RWY 15

VORTAC CHS 113.5 Chan 82	APCH CRS 157°	Rwy Idg TDZE Arprt Elev 9001 43 46
--	-------------------------	--

[USAF]

CHARLESTON AFB/INTL (KCHS)

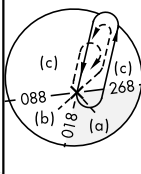
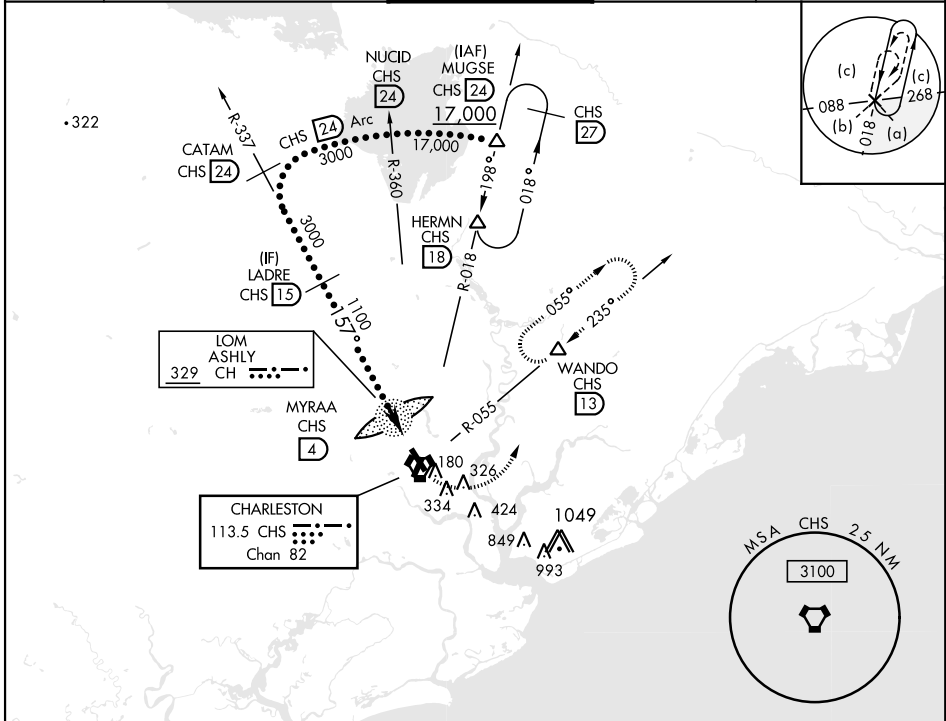
DME required



MISSED APPROACH: Climb to 500 then climbing left turn to 3500 on CHS VORTAC R-055 to WANDO/CHS 13 DME and hold, continue climb-in-hold to 3500.

▼ * When ALS inop, increase CAT CDE RVR to 60, vis to 1½ miles.

ATIS 124.75	APP CON 120.7 306.925 (151° - 330°) 121.275 379.925 (331° - 150°)	TOWER 126.0 239.0	GND CON 121.9 348.6	CLNC DEL 127.325 291.65
-----------------------	---	-----------------------------	-------------------------------	-----------------------------------

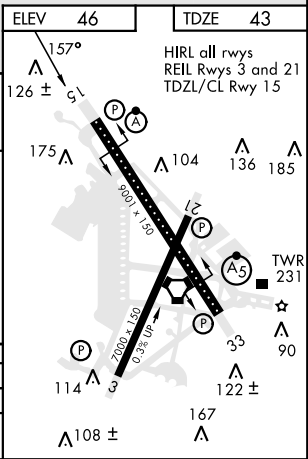
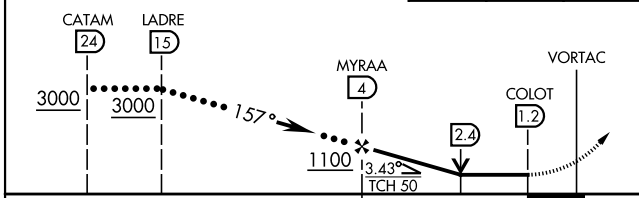
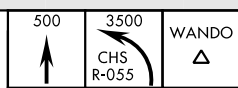


SE-2, 03 OCT 2024 to 31 OCT 2024

SE-2, 03 OCT 2024 to 31 OCT 2024

EMERG SAFE ALT 100 NM 3200

VGSI and descent angles not coincident.



CATEGORY	C	D	E
S-15*	460/40	417	(500-3)
CIRCLING	540-1½ 494 (500-1½)	740-2¼ 694 (700-2¼)	740-2½ 694 (700-2½)

CHARLESTON, SOUTH CAROLINA

32°54'N-80°02'W

CHARLESTON AFB/INTL (KCHS)

Amtd 4A 17JUN21

HI-VOR or TACAN RWY 15