


LOC I-CCI 108.9	APP CRS 334°	Rwy Idg TDZE Apt Elev	9001 45 46
---------------------------	------------------------	-----------------------------	---------------------------------------

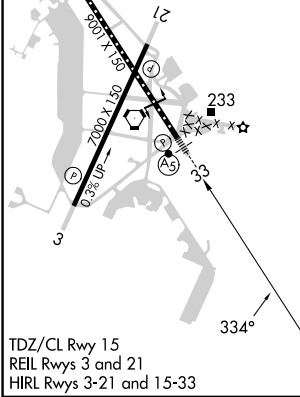
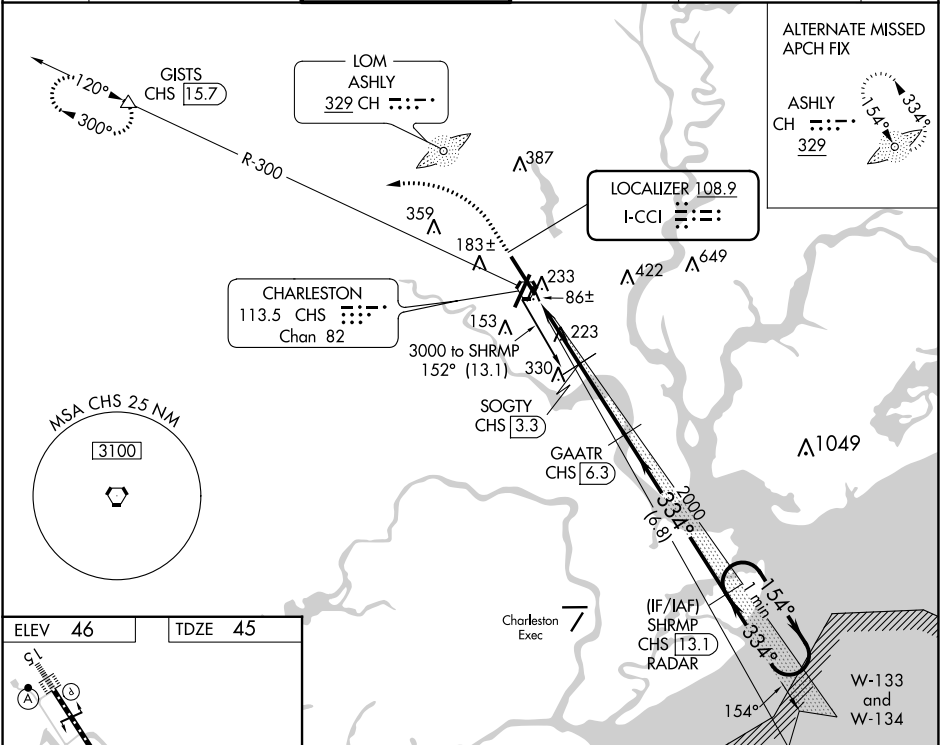
ILS or LOC RWY 33

CHARLESTON AFB/INTL (CHS)

⚠ DME from CHS VORTAC. Simultaneous reception of I-CCI and CHS DME required. DME required. For inop MALSRS, increase S-ILS 33 Cat E visibility to RVR 4000 and S-LOC 33 Cat E visibility to 1 $\frac{1}{2}$ %.
**** RVR 1800 authorized with use of FD or AP or HUD to DA.**

MALSRS

MISSED APPROACH: Climb to 500 then climbing left turn to 2100 on heading 280° and on CHS VORTAC R-300 to GISTS/15.7 DME and hold.

D-ATIS 124.75	CHARLESTON APP CON 120.7 306.925	CHARLESTON TOWER 126.0 239.0	GND CON 121.9 348.6	CLNC DEL 127.325 291.65	CPDLC
-------------------------	--	--	-------------------------------	-----------------------------------	-------



500	2100	CHS R-300	GISTS	GAATR CHS [6.3]	SHRMP CHS [13.1] RADAR	One Minute Holding Pattern
↑	hdg 280°		△			GS 3.00° TCH 51
*LOC only.						
		*CHS [1.5]	SOGTY CHS [3.3]	2000	334°	154° → 3000
		CHS [0.3]		1040*		← 334°
VGSi and ILS glidepath not coincident (VGSi Angle 3.00/TCH 59).						
1.2 NM		1.8 NM		3 NM		6.8 NM
CATEGORY	A	B	C	D	E	
S-ILS 33 **	245/24			200 (200- $\frac{1}{2}$)		
S-LOC 33	480/24	435 (500- $\frac{1}{2}$)		480/45	435 (500- $\frac{3}{8}$)	
CIRCLING	540-1	494 (500-1)		540-1 $\frac{1}{2}$	740-2 $\frac{1}{4}$	740-2 $\frac{1}{2}$
				494 (500-1 $\frac{1}{2}$)	694 (700-2 $\frac{1}{4}$)	694 (700-2 $\frac{1}{2}$)

SE-2, 03 OCT 2024 to 31 OCT 2024

SE-2, 03 OCT 2024 to 31 OCT 2024