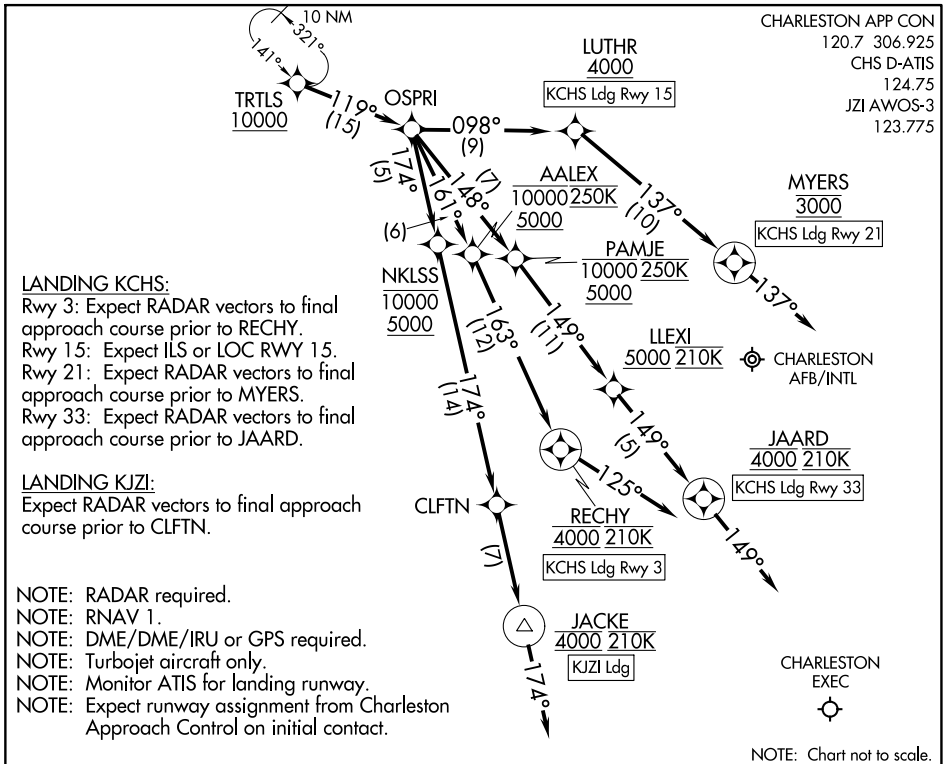


# OSPRI SEVEN ARRIVAL (RNAV) Arrival Routes

CHARLESTON, SOUTH CAROLINA



SE-2, 03 OCT 2024 to 31 OCT 2024

SE-2, 03 OCT 2024 to 31 OCT 2024

## ARRIVAL ROUTE DESCRIPTION

**KCHS:** From TRTLS on track 119° to OSPRI.

**LANDING KCHS RUNWAY 3:** From OSPRI on track 161° to cross AALEX between 5000 and 10000 and at 250K, then on track 163° to cross RECHY at 4000 and at 210K, then on heading 125° or as assigned by ATC. Expect RNP RWY 3 approach.

Non-RNP aircraft: Expect RADAR vectors to final approach course.

**LANDING KCHS RUNWAY 15:** From OSPRI on track 098° to cross LUTHR at or above 4000. Expect ILS or LOC RWY 15 approach.

**LANDING KCHS RUNWAY 21:** From OSPRI on track 098° to cross LUTHR at or above 4000, then on track 137° to cross MYERS at 3000, then on heading 137° or as assigned by ATC.

Expect RNP RWY 21 approach. Non-RNP aircraft: Expect RADAR vectors to final approach course.

**LANDING KCHS RUNWAY 33:** From OSPRI on track 148° to cross PAMJE between 5000 and 10000 and at 250K, then on track 149° to cross LLEXI at or above 5000 and at 210K, then on track 149° to cross JAARD at 4000 and at 210K, then on heading 149° or as assigned by ATC.

Expect RNP RWY 33 approach. Non-RNP aircraft: Expect RADAR vectors to final approach course.

**LANDING KJZI:** From TRTLS on track 119° to OSPRI, then on track 174° to cross NKLSS between 5000 and 10000, then on track 174° to CLFTN, then on track 174° to cross JACKE at 4000 and at 210K, then on heading 174° or as assigned by ATC.

Expect RADAR vectors to final approach course.

# OSPRI SEVEN ARRIVAL (RNAV) Arrival Routes

CHARLESTON, SOUTH CAROLINA