

(SWPFX3.SWPFX) 23166

AL-76 (FAA)

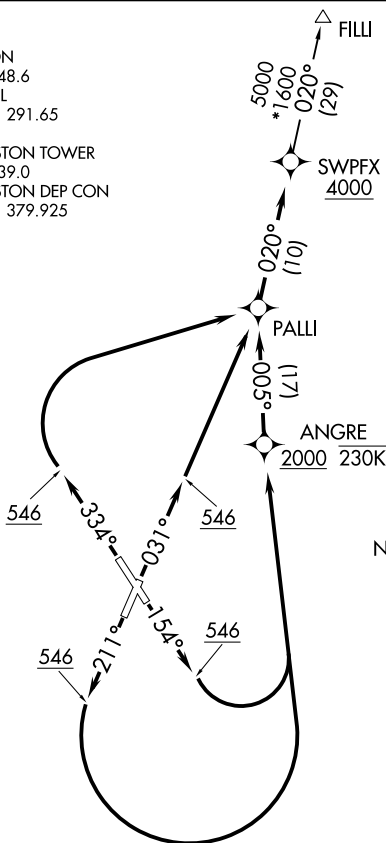
CHARLESTON AFB/INTL (CHS)  
CHARLESTON, SOUTH CAROLINA

# SWPFX THREE DEPARTURE (RNAV)

RNAV 1 - DME/DME/IRU or GPS.  
RADAR required for non-GPS equipped aircraft.

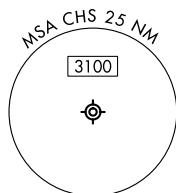
**TOP ALTITUDE:  
4000**

D-ATIS  
124.75  
GND CON  
121.9 348.6  
CLNC DEL  
127.325 291.65  
CPDLC  
CHARLESTON TOWER  
126.0 239.0  
CHARLESTON DEP CON  
121.275 379.925



TAKEOFF MINIMUMS  
Rwys 3, 15, 21, 33: Standard.

NOTE: For non-GPS equipped aircraft, CHS and VAN DMEs must be operational for takeoff Rwy 21.



NOTE: Chart not to scale.

## DEPARTURE ROUTE DESCRIPTION

TAKEOFF RUNWAY 3: Climb on heading 031° to 546, then direct PALLI, then on track 020° to cross SWPFX at or above 4000, thence . . . .

TAKEOFF RUNWAY 15: Climb on heading 154° to 546, then left turn direct to cross ANGRE at or above 2000 at or below 230K, then on depicted route to cross SWPFX at or above 4000, thence . . . .

TAKEOFF RUNWAY 21: Climb on heading 211° to 546, then left turn direct to cross ANGRE at or above 2000 at or below 230K, then on depicted route to cross SWPFX at or above 4000, thence . . . .

TAKEOFF RUNWAY 33: Climb on heading 334° to 546, then right turn direct PALLI, then on track 020° to cross SWPFX at or above 4000, thence . . . .

. . . . on assigned transition. Maintain 4000. Expect clearance to filed altitude 10 minutes after departure.

FILLI TRANSITION (SWPFX3.FILLI)

# SWPFX THREE DEPARTURE (RNAV)

(SWPFX3.SWPFX) 20APR23

CHARLESTON, SOUTH CAROLINA  
CHARLESTON AFB/INTL (CHS)

SE-2, 03 OCT 2024 to 31 OCT 2024

SE-2, 03 OCT 2024 to 31 OCT 2024