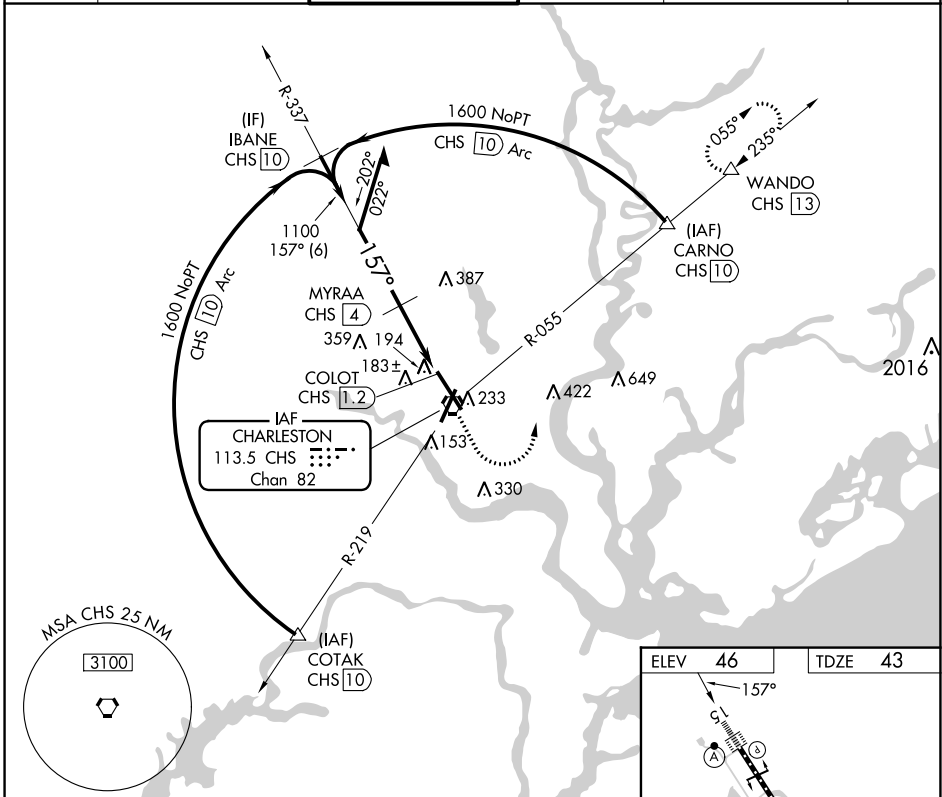


VORTAC CHS 113.5 Chan 82	APP CRS 157°	Rwy Idg TDZE 43 Apt Elev 46	9001
--	------------------------	---	-------------

VOR Y or TACAN Y RWY 15

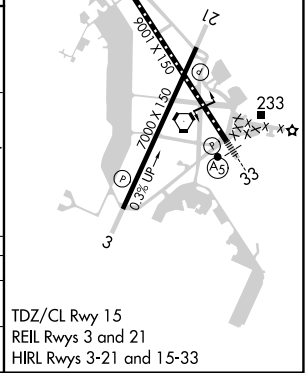
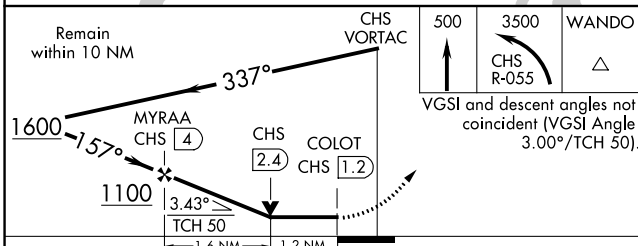
CHARLESTON AFB/INTL (CHS)

DME required. ▼ For inop ALS, increase S-15 Cat A/B visibility to RVR 5500 and Cat C/D visibility to RVR 6000. ▲		ALSF-2 ▲	MISSED APPROACH: Climb to 500 then climbing left turn to 3500 on CHS VORTAC R-055 to WANDO/CHS 13 DME and hold, continue climb-in-hold to 3500.		
D-ATIS 124.75	CHARLESTON APP CON 120.7 306.925	CHARLESTON TOWER 126.0 239.0	GND CON 121.9 348.6	CLNC DEL 127.325 291.65	CPDLC



SE-2, 03 OCT 2024 to 31 OCT 2024

SE-2, 03 OCT 2024 to 31 OCT 2024



CATEGORY	A	B	C	D
S-15	460/24	417 (500-½)	460/40	417 (500-¾)
CIRCLING	540-1	494 (500-1)	540-1½ 494 (500-1½)	740-2¼ 694 (700-2¼)

TDZ/CL Rwy 15
REIL Rws 3 and 21
HIRL Rws 3-21 and 15-33