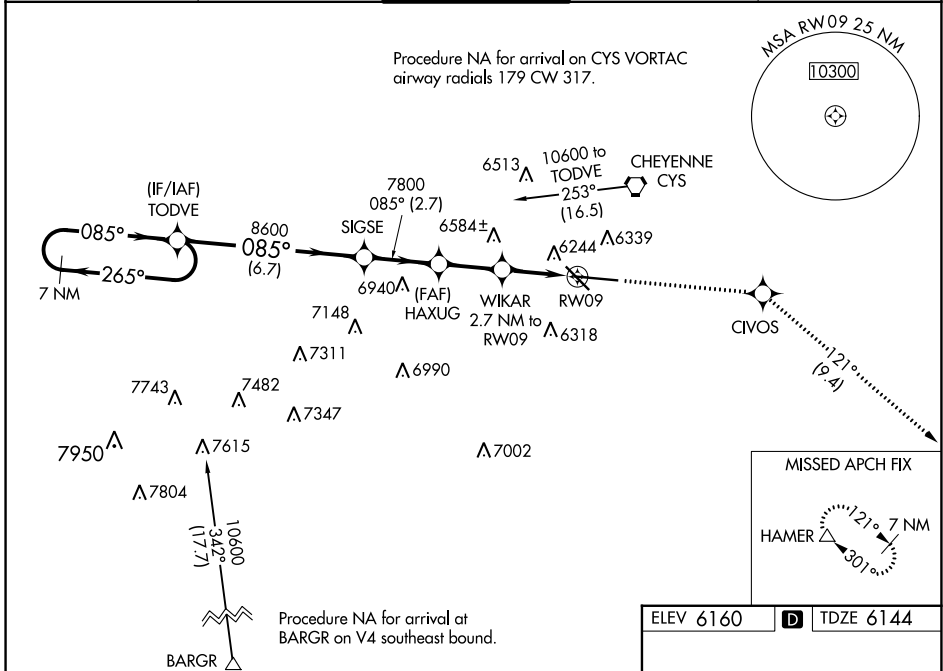


WAAS CH <b>73009</b> <b>W09A</b>	APP CRS <b>085°</b>	Rwy Idg TDZE Apt Elev	<b>7985</b> <b>6144</b> <b>6160</b>
--	------------------------	-----------------------------	---

**RNAV (GPS) RWY 9**  
CHEYENNE RGNL/JERRY OLSON FLD (CYS)

<p><b>⚠</b> For uncompensated Baro-VNAV systems, LNAV/VNAV NA below -27°C (-16°F) or above 36°C (96°F). DME/DME RNP-0.3 NA. Rwy 9 helicopter visibility reduction below ¾ SM NA.</p>	<p>MISSED APPROACH: Climb to 8500 direct CIVOS and on track 121° to HAMER and hold.</p>
	<p>Procedure NA for arrival on CYS VORTAC airway radials 179 CW 317.</p>

ATIS <b>134.425 278.3</b>	CHEYENNE APP CON* <b>124.55 263.075</b>	<b>CHEYENNE TOWER*</b> <b>118.7(CTAF) 0 257.8</b>	GND CON <b>121.9 254.275</b>	UNICOM <b>122.95</b>
------------------------------	--	--	---------------------------------	-------------------------



7 NM Holding Pattern	TODVE	SIGSE	HAXUG	WIKAR 2.7 NM to RW09	*RNAV only
GP 3.00° TCH 50	10600	8600	7800	*7060	*1.1 NM to RW09
CATEGORY	A	B	C	D	
LPV DA	6473-1¼		329 (400-1¼)		
LNAV/VNAV DA	6543-1½		399 (400-1½)		
LNAV MDA	6540-1		396 (400-1)		6540-1¼ 396 (400-1¼)
CIRCLING	6640-1 480 (500-1)		6900-2 740 (800-2)		6940-2½ 780 (800-2½)

ELEV 6160 TDZE 6144

MISSED APCH FIX  
HAMER 7 NM 121° 301°

85° to RW09

TWR 6256  
2.0% DOWN  
2.0% UP  
0.4% DOWN  
0.7% UP

REIL Rwy 9, 13, and 31  
HIRL Rwy 9-27  
MIRL Rwy 13-31

NW-1, 03 OCT 2024 to 31 OCT 2024

NW-1, 03 OCT 2024 to 31 OCT 2024