

APP CRS	Rwy Idg	6095
034°	TDZE	4186
	Apt Elev	4187

RNAV (GPS) RWY 3

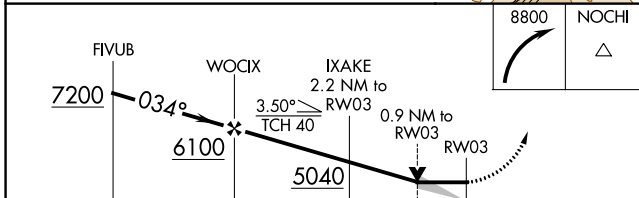
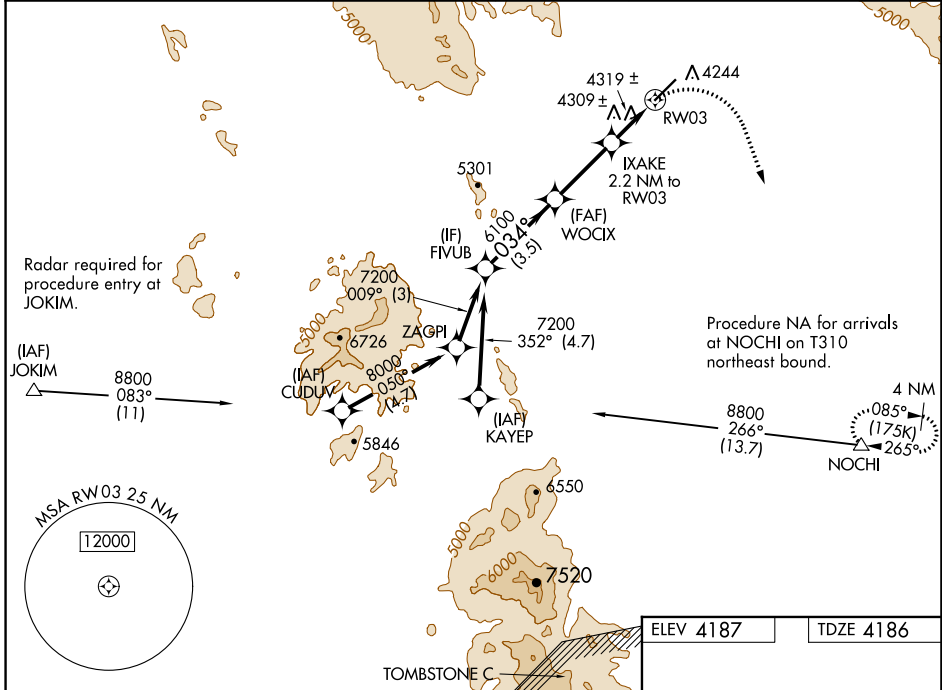
COCHISE COUNTY (P33)

RNP APCH - GPS.

When local altimeter setting not received, use Douglas Bisbee altimeter setting. VDP NA with Douglas Bisbee altimeter setting.

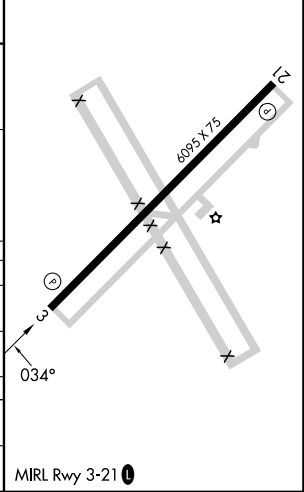
MISSED APPROACH: Climbing right turn to 8800 direct NOCHI and hold, continue climb-in-hold to 8800.

AWOS-3PT 119.025	ALBUQUERQUE CENTER 134.45 327.15	UNICOM 122.8 (CTAF) 0
----------------------------	--	---------------------------------



ELEV 4187	TDZE 4186
-----------	-----------

CATEGORY	A	B	C	D
LNAV MDA	4560-1	374 (400-1)		NA
CIRCLING	4600-1 413 (500-1)	4660-1 473 (500-1)		NA
DOUGLAS BISBEE ALTIMETER SETTING MINIMUMS				
LNAV MDA	4680-1	494 (500-1)		NA
CIRCLING	4720-1 533 (600-1)	4780-1 593 (600-1)		NA



SW-4, 03 OCT 2024 to 31 OCT 2024

SW-4, 03 OCT 2024 to 31 OCT 2024