

WAAS CH <b>40026</b> <b>W23A</b>	APP CRS <b>232°</b>	Rwy Idg TDZE Apt Elev	<b>7001</b> <b>213</b> <b>236</b>
--	------------------------	-----------------------------	---

# RNAV (GPS) RWY 23

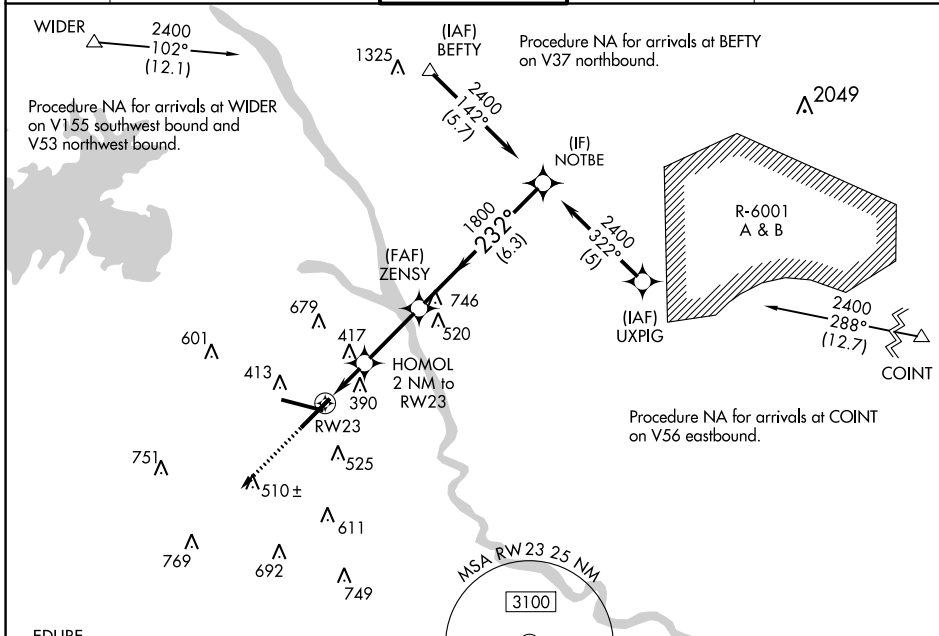
COLUMBIA METRO (CAE)

RNP APCH - GPS.

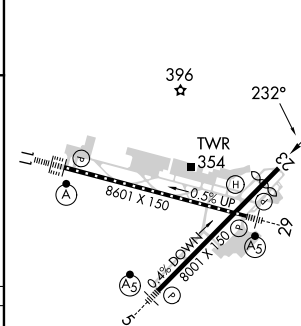
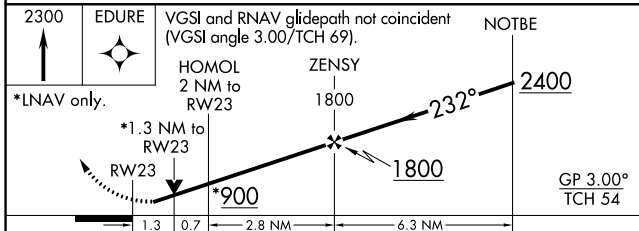
▼ For uncompensated Baro-VNAV systems, LNAV/VNAV NA below -15°C or above 54°C. Rwy 23 helicopter visibility reduction below ¾ SM NA.

MISSED APPROACH: Climb to 2300 direct EDURE and hold.

ATIS <b>120.15</b>	COLUMBIA APP CON <b>133.4 285.6</b> (290°-109°) <b>124.15 338.2</b> (110°-289°)	COLUMBIA TOWER <b>119.5 257.8</b>	GND CON <b>121.9 348.6</b>	CLNC DEL <b>119.75</b>
-----------------------	---	--------------------------------------	-------------------------------	---------------------------



ELEV 236	TDZE 213
----------	----------



CATEGORY	A	B	C	D
LPV DA	503/50 290 (300-1)			
LNAV/VNAV DA	709-1¼ 496 (500-1¼)			
LNAV MDA	680/50 467 (500-1)	680/60 467 (500-1¼)	680-1½ 467 (500-1½)	680-1½ 467 (500-1½)
CIRCLING	740-1 504 (600-1)	860-1 624 (700-1)	1040-2¼ 804 (900-2¼)	1040-2½ 804 (900-2½)

REIL Rwy 23  
TDZ/CL Rwy 11  
HIRL Rwys 5-23 and 11-29

SE-2, 03 OCT 2024 to 31 OCT 2024

SE-2, 03 OCT 2024 to 31 OCT 2024