

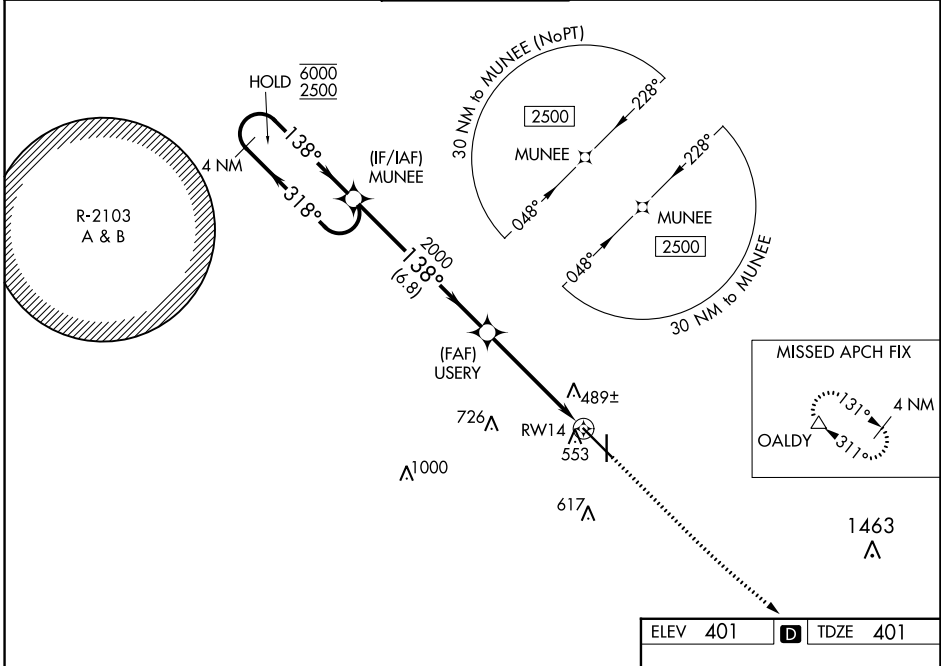
|  |                        |   |
|--|------------------------|---|
| WAAS<br>CH <b>86504</b><br><b>W14A</b> | APP CRS<br><b>138°</b> | Rwy ldg <b>8496</b><br>TDZE <b>401</b><br>Apt Elev <b>401</b> |
|--|------------------------|---|

# RNAV (GPS) RWY 14

DOTHAN RGNL (DHN)

|   |  |  |  |  |
|---|--|--|--|--|
| RNP APCH - GPS.   |  | MISSED APPROACH: Climb to 900 then climbing left turn to 3000 direct OALDY and hold. |  |  |
| <p><b>⚠</b> For uncompensated Baro-VNAV systems, LNAV/VNAV NA below -3°C or above 54°C. Intense student helicopter pilot training in vicinity of airport.</p> |  |  |  |  |

|                        |  |   |                               |                         |
|------------------------|--|---|-------------------------------|-------------------------|
| ATIS<br><b>135.725</b> | CAIRNS APP CON *<br><b>125.4 327.125</b> | DOTHAN TOWER *<br><b>118.4 (CTAF) 0 257.6</b> | GND CON<br><b>121.7 348.6</b> | UNICOM<br><b>122.95</b> |
|------------------------|--|---|-------------------------------|-------------------------|



SE-4, 03 OCT 2024 to 31 OCT 2024

SE-4, 03 OCT 2024 to 31 OCT 2024

| 4 NM Holding Pattern |         | VGSIs and RNAV glidepath not coincident (VGSi Angle 3.00/TCH 40). |                 | 900              | 3000   | OALDY  |
|----------------------|---------|---|-----------------|------------------|--------|--------|
| MUNEE                |         | USERY   |                 | ↑                | ↷      | △      |
| 6000<br>2500         | ← 318°  | → 138°  | 2000            | 1.2 NM to RWY 14 | RWY 14 |        |
| GP 3.00°<br>TCH 54   | 2000    |   | 6.8 NM          |                  | 3.7 NM | 1.2 NM |
| CATEGORY             | A       | B   | C               | D                |        |        |
| LPV DA               | 601-3/4 |   | 200 (200-3/4)   |                  |        |        |
| LNAV/VNAV DA         | 724-1   |   | 323 (400-1)     |                  |        |        |
| LNAV MDA             | 820-1   | 419 (500-1)   | 820-1 1/8       | 419 (500-1 1/8)  |        |        |
| <b>C</b> CIRCLING    | 860-1   | 459 (500-1)   | 920-1 1/2       | 1040-2           |        |        |
|                      |         |   | 519 (600-1 1/2) | 639 (700-2)      |        |        |

ELEV 401 **D** TDZE 401

This diagram shows the runway (RWY 14) and taxiway (TWY 36) area. It includes the tower (TWR 492), runway lights (REIL Rwy 18, REIL Rwy 14, HIRL Rwy 18-36, HIRL Rwy 14-32), and various navigational aids like the 8399X 150 marker and 555 marker. The runway width is 80 ft, and the taxiway width is 36 ft. A 0.3% UP slope is indicated for the taxiway.