

WAAS CH 49118 W18A	APP CRS 183°	Rwy Idg TDZE Apt Elev	5000 393 401
--	------------------------	-----------------------------	---

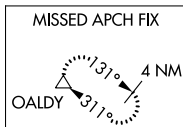
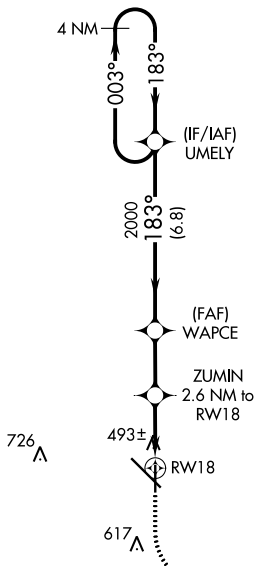
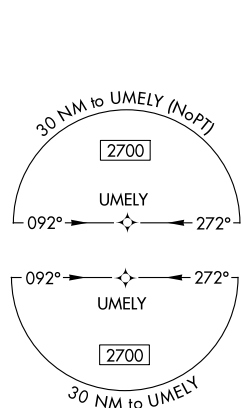
RNAV (GPS) RWY 18

DOTHAN RGNL (DHN)

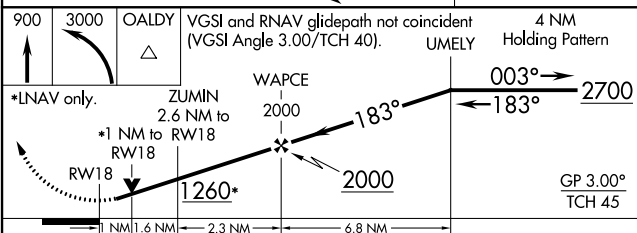
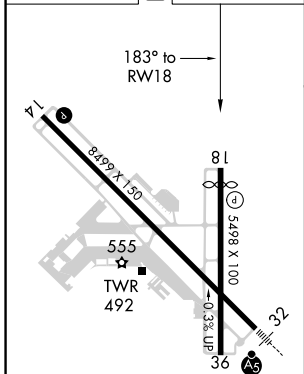
▼ For uncompensated Baro-VNAV systems, LNAV/VNAV NA below -1.5°C (5°F) or above 41°C (105°F). DME/DME RNP-0.3 NA. Visibility reduction by helicopters NA.

MISSED APPROACH: Climb to 900 then climbing left turn to 3000 direct OALDY and hold.

ATIS 135.725	CAIRNS APP CON * 125.4 327.125	DOTHAN TOWER * 118.4 (CTAF) 0 257.6	GND CON 121.7 348.6	UNICOM 122.95
------------------------	--	--	-------------------------------	-------------------------



ELEV 401	D	TDZE 393
-----------------	----------	-----------------



CATEGORY	A	B	C	D
LPV DA		643-3/4	250 (300-3/4)	
LNAV/VNAV DA		674-7/8	281 (300-7/8)	
LNAV MDA		760-1	367 (400-1)	
C CIRCLING	860-1	459 (500-1)	920-1 1/2 519 (600-1 1/2)	1040-2 639 (700-2)

- REIL Rwy 18
- REIL Rwy 14
- HIRL Rwy 18-36
- HIRL Rwy 14-32

SE-4, 03 OCT 2024 to 31 OCT 2024

SE-4, 03 OCT 2024 to 31 OCT 2024