

FORT BLISS, TEXAS

# ILS or LOC RWY 22

I-BIF LOC/DME <b>110.9</b> Chan <b>46</b>	APCH CRS <b>216°</b>	Rwy Idg <b>13,554</b> TDZE <b>3947</b> Arprt Elev <b>3947</b>
---	-------------------------	---

[USA]

BIGGS AAF (KBIF)

RADAR required when R-5103-A,B,C, R-5107K are active.	SSALR 	MISSED APPROACH: Climb to 4600, then climbing left turn to 9000 direct ELP VORTAC. Proceed outbound ELP R-040 to PIERS intersection and hold. Continue climb in hold to 9000.
---	-----------	---

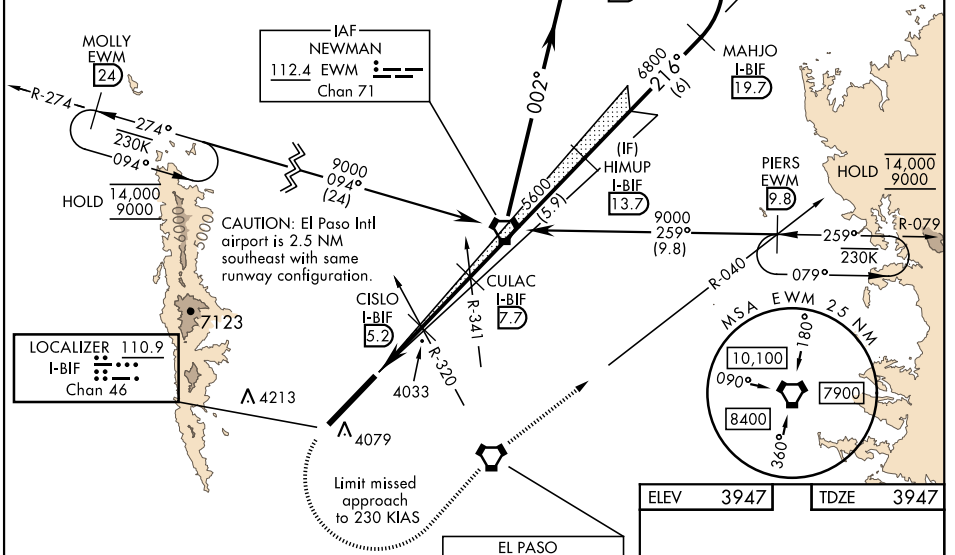
EL PASO ATIS <b>120.0 254.3</b>	EL PASO APP <b>119.15 353.5</b> (S of V16) <b>124.25 298.85</b> (N of V16)	TOWER <b>127.9 342.25</b>	GND CON <b>121.6 251.125</b>	EL PASO CLNC HDL <b>125.0 379.1</b>	ASR
------------------------------------	--	------------------------------	---------------------------------	--	-----

Arrivals expect RADAR vectors to final when restricted areas are active.

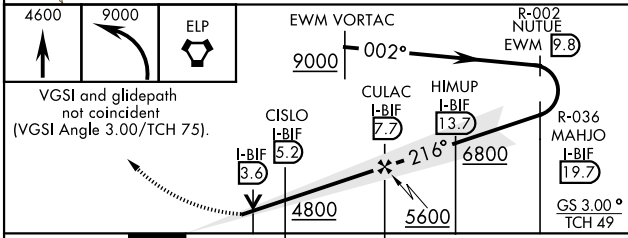
Procedure NA via V-94-611, T317 westbound holding at MOLLY. ATC clearance required.

Procedure NA via V-560 eastbound without holding at PIERS. ATC clearance required.

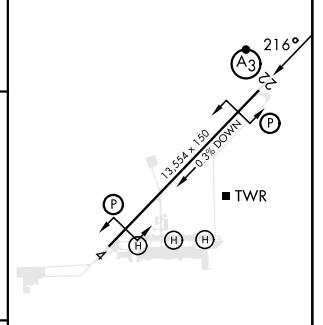
Inop table does not apply.



EMERG SAFE ALT 100 NM 13,100



ELEV 3947	TDZE 3947
-----------	-----------



CATEGORY	A	B	C	D	E
S-ILS 22		4147- $\frac{3}{4}$	200	(200- $\frac{3}{4}$ )	
S-LOC 22		4300-1	353	(400-1)	
CIRCLING*	4380-1 433 (500-1)	4400-1 453 (500-1)	4560-1 $\frac{3}{4}$ 613 (700-1 $\frac{3}{4}$ )	4560-2 613 (700-2)	4560-2 $\frac{1}{2}$ 613 (700-2 $\frac{1}{2}$ )

HIRL Rwy 04-22					
REIL Rwy 04, 22					
FAF to MAP 5.0 NM					
Knots	60	90	120	150	180
Min:Sec	5:00	3:20	2:30	2:00	1:40

FORT BLISS, TEXAS

31° 51' N - 106° 23' W

BIGGS AAF (KBIF)

Orig 25JAN24

# ILS or LOC RWY 22

SC-3, 03 OCT 2024 to 31 OCT 2024

SC-3, 03 OCT 2024 to 31 OCT 2024