

RNAV (GPS) RWY 22

APCH CRS	Rwy Idg	13,554
216°	TDZE	3947
	Arprt Elev	3947

[USA]

BIGGS AAF (KBIF)

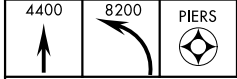
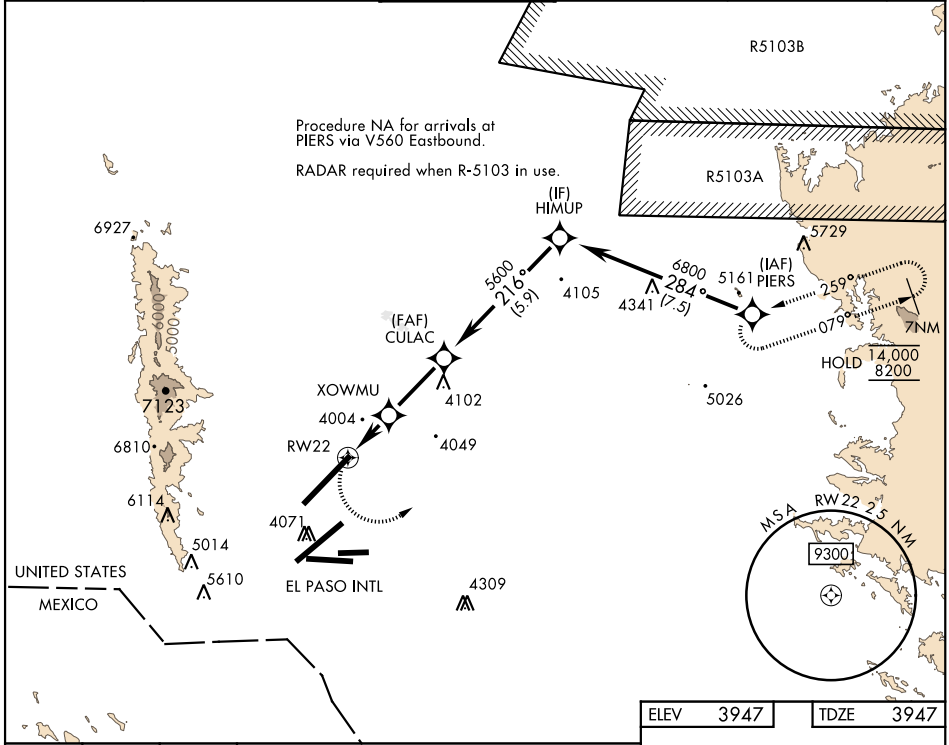
RNP APCH

▼ * When ALS inop, increase CAT AB vis to 1 mile, CAT CD vis to ½ mile.
 ** Circling not authorized for CAT D West of Rwy 4-22.

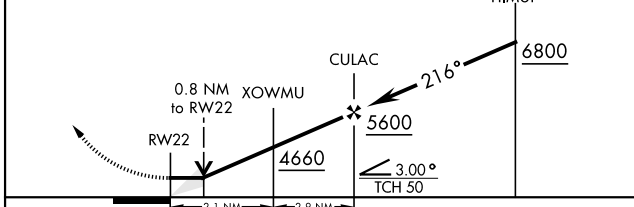


MISSED APPROACH: Climb to 4400 then climbing left turn to 8200 direct PIERS and hold, continue climb-in-hold to 8200.

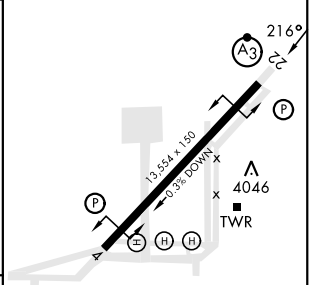
ATIS	EL PASO APP CON	TOWER	GND CON	EL PASO CLNC DEL	ASR
120.0 254.3	119.15 353.5 S of V16 124.25 298.85 N of V16	127.9 342.25	121.6 251.125	125.0 379.1	



VGSI and descent angles not coincident (VGSI Angle 3.00/TCH 75).



ELEV	3947	TDZE	3947
------	------	------	------



CATEGORY	A	B	C	D
LNNAV MDA *	4260-¾	313	(400-¾)	
CIRCLING **	4400-1	453 (500-1)	4540-1½ 593 (600-1½)	4540-2 593 (600-2)

▲	3995	★	4063
HIRL Rwy 4-22 REIL Rws 4 and 22			

RNAV (GPS) RWY 22

SC-3, 03 OCT 2024 to 31 OCT 2024

SC-3, 03 OCT 2024 to 31 OCT 2024