

APP CRS	Rwy Idg	6000
191°	TDZE	144
	Apt Elev	147

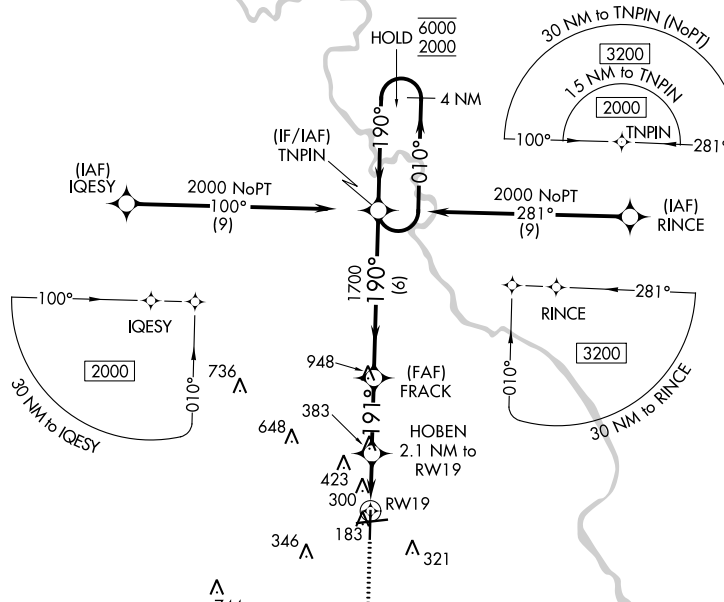
RNAV (GPS) RWY 19

FLORENCE RGNL (FLO)

RNP APCH - GPS.		MISSED APPROACH: Climb to 2000 direct PAILS and on track 188° to NUTAL and hold.			
<p>▼ Rwy 19 helicopter visibility reduction below 1 SM NA. Straight-in Rwy 19 NA at night, Circling Rwy 1, 19 NA at night.</p>		<p>ATIS 123.625</p>		<p>FLORENCE APP CON★ 118.6 341.7 (256°-074°) 135.25 316.15 (075°-255°)</p>	
<p>FLORENCE TOWER★ 125.1 (CTAF) 353.85</p>		<p>GND CON 121.9 353.85</p>		<p>CLNC DEL 121.9 353.85</p>	
				<p>UNICOM 122.95</p>	

SE-2, 03 OCT 2024 to 31 OCT 2024

SE-2, 03 OCT 2024 to 31 OCT 2024



ELEV 147	TDZE 144
191°	

MIRL Rwy 1-19
REIL Rwy 1, 19 and 27
HIRL Rwy 9-27

MISSED APCH FIX

NUTAL

2000	PAILS	NUTAL	VGSI and descent angles not coincident (VGSI Angle 3.00/TCH 32).	
↑	♦	△	4 NM	Holding Pattern
		tr 188°		

CATEGORY	A	B	C	D
LNAV MDA	560-1	416 (500-1)	560-1 ¹ / ₈	416 (500-1 ¹ / ₈)
CIRCLING	640-1 493 (500-1)	660-1 513 (600-1)	900-2 ¹ / ₄ 753 (800-2 ¹ / ₄)	900-2 ¹ / ₂ 753 (800-2 ¹ / ₂)