

# ILS or LOC RWY 33

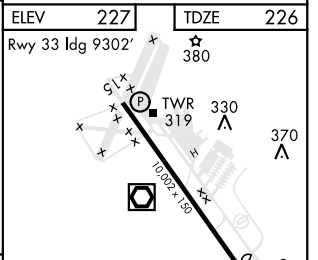
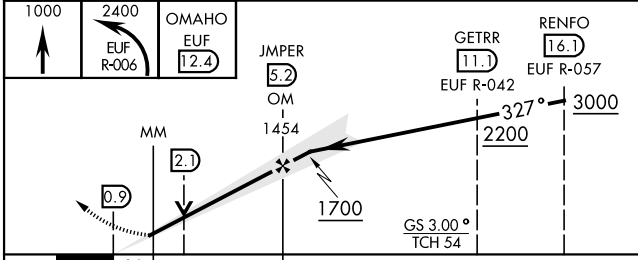
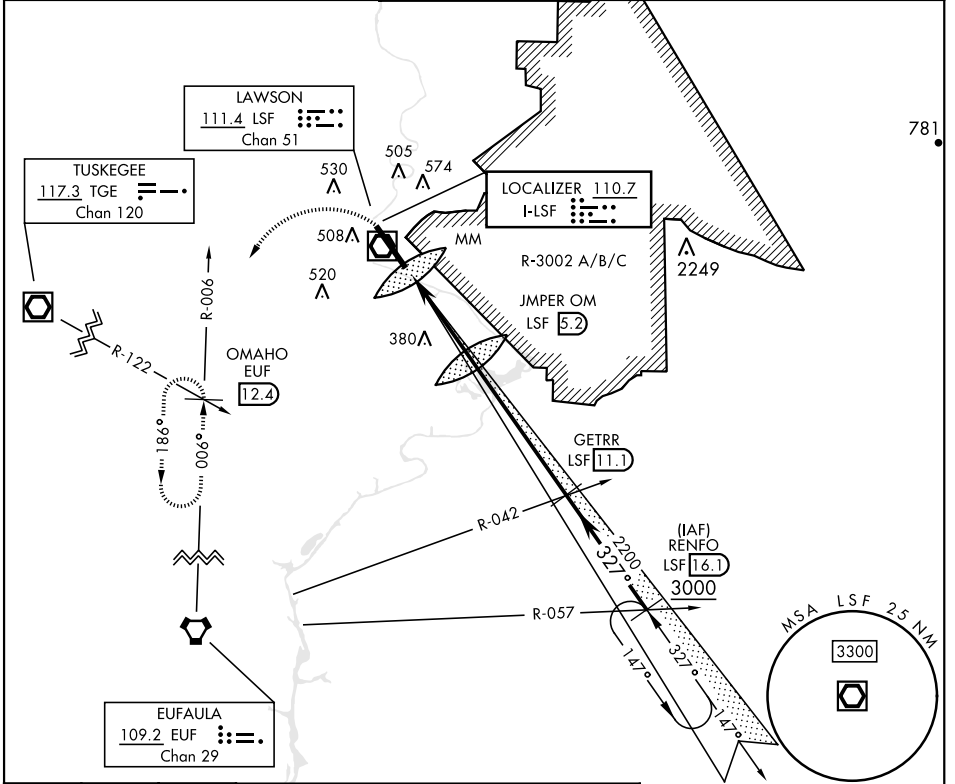
LOC I-LSF <b>110.7</b>	APCH CRS <b>327°</b>	Rwy ldg TDZE Arpt Elev <b>9302</b> <b>226</b> <b>227</b>
---------------------------	-------------------------	---

[USA]

LAWSON AAF (KLSF)

<p>▼ * Circling not authorized E of Rwy 15-33.</p> <p>NA when tower closed.</p>	<p>SALSF</p> 	<p>MISSED APPROACH: Climb to 1000 then climbing left turn to 2400 via EUF R-006 to OMAHO INT/EUF 12.4 DME and hold.</p>
---	--	---

<p>ATIS ★</p> <p><b>134.375</b></p>	<p>ATLANTA APP CON</p> <p><b>125.5 323.1</b></p>	<p>TOWER</p> <p><b>119.05</b> (CTAF) <b>269.525</b></p>	<p>GND CON</p> <p><b>121.7 254.25</b></p>	<p>CLNC DEL</p> <p><b>121.7 251.15</b></p>
-------------------------------------	--	---	---	--



CATEGORY	A	B	C	D
S-ILS 33	426/24 200 (200-½)		426/40 200 (200-¾)	
S-LOC 33	640/40 414 (500-¾)		640/50 414 (500-1)	
CIRCLING*	820-1 593 (600-1)		840-1 613 (700-1 ¾)	880-2 653 (700-2)

HIRL Rwy 15-33				
FAF to MAP 4.4 NM				
Knots	60	90	120	150 180
Min:Sec	4:24	2:56	2:12	1:46 1:28

# ILS or LOC RWY 33

SE-4, 03 OCT 2024 to 31 OCT 2024

SE-4, 03 OCT 2024 to 31 OCT 2024