

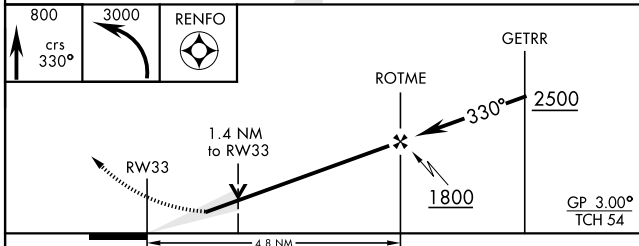
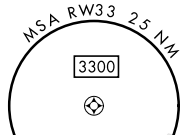
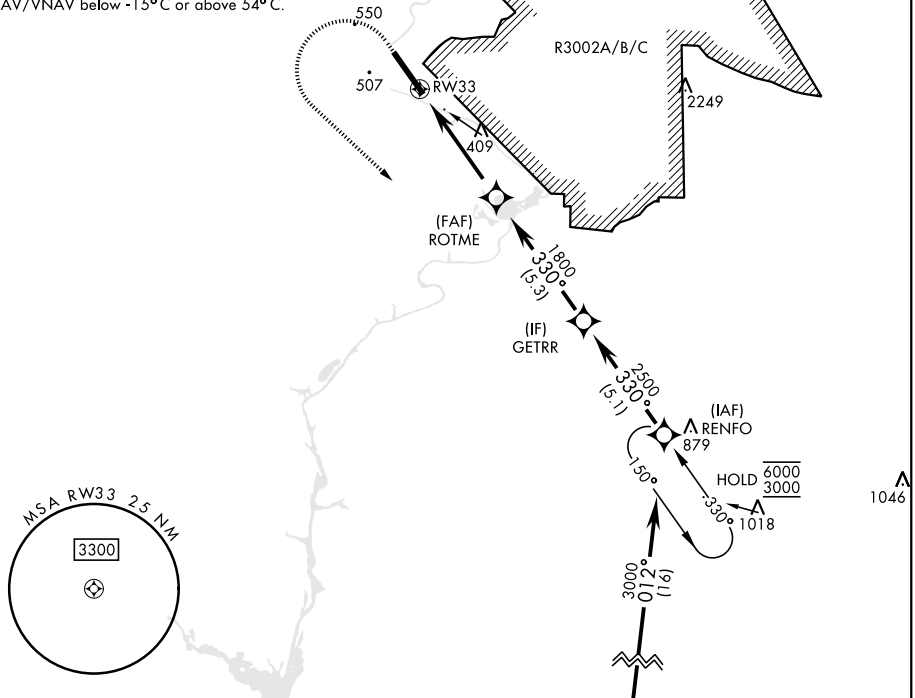
RNAV (GPS) RWY 33

WAAS CH 67545 W33A	APCH CRS 330°	Rwy Ldg TDZE Arpt Elev 9302 226 227	[USA]	LAWSON AAF (KLSF)
--	-------------------------	---	-------	-------------------

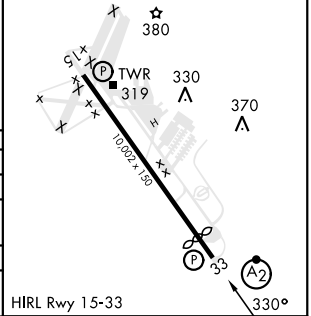
RNP APCH-GPS	SALSF (A2)	MISSED APPROACH: Climb to 800 then climbing left turn to 3000 direct RENFO and hold.
<p>▼ *When ALS inop, increase vis to 1½ mile. **When ALS inop, increase CAT AB RVR to 55, vis to 1 mile; CAT CD vis to 1½ miles. *** Circling not authorized NE of Rwy 15-33. Not authorized when tower closed.</p>		

ATIS ★ 134.375	ATLANTA APP CON 125.5 323.1	TOWER 119.05 (CTAF) 269.525	GND CON 121.7 254.25	CLNC DEL 121.7 251.15
--------------------------	---------------------------------------	---------------------------------------	--------------------------------	---------------------------------

For uncompensated Baro-VNAV systems, LNAV/VNAV below -15°C or above 54°C.



ELEV	227	TDZE	226
Rwy 33 Ldg 9302'			



CATEGORY	A		B		C		D	
LPV DA	427/40		200		(200-¾)			
LNAV/VNAV DA*	701/60		474		(500-1½)			
LNAV MDA**	740/40	513	(600-¾)	740-1¼	513	(600-1¼)		
*** CIRCLING	820-1	860-1	960-2	1080-2¾				
	593 (600-1)	633 (700-1)	733 (800-2)	853 (900-2¾)				

RNAV (GPS) RWY 33

SE-4, 03 OCT 2024 to 31 OCT 2024

SE-4, 03 OCT 2024 to 31 OCT 2024