

WAAS CH <b>49242</b> <b>W12A</b>	APP CRS <b>111°</b>	Rwy Idg TDZE Apt Elev	<b>3212</b> <b>280</b> <b>280</b>
--	------------------------	-----------------------------	---

# RNAV (GPS) RWY 12

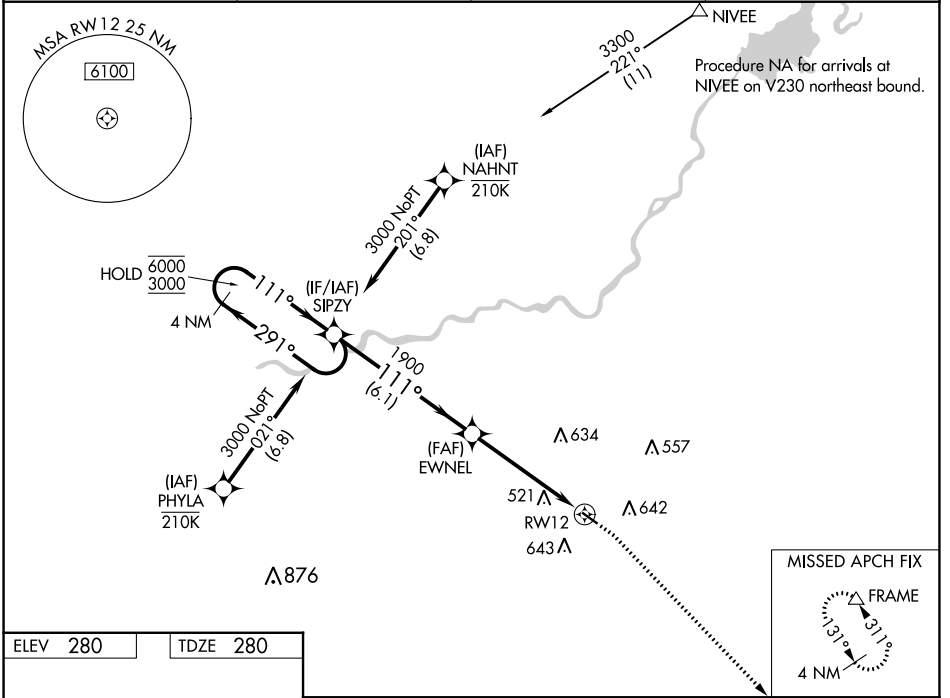
FRESNO CHANDLER EXEC (FCH)

RNP APCH-GPS.

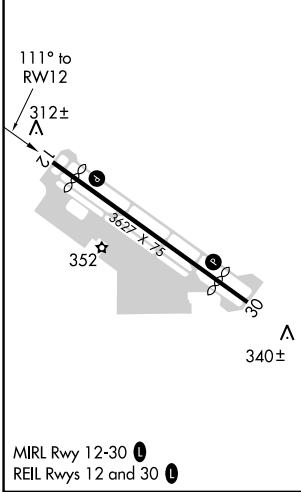
▼ Circling Rwy 30 NA at night. Rwy 12 helicopter visibility reduction below 3/4 SM NA.  
▲ For uncompensated Baro-VNAV systems, LNAV/VNAV NA below -1° C or above 54°C.

MISSED APPROACH: Climb to 800 then climbing right turn to 2000 direct FRAME and hold.

AWOS-3 <b>135.225</b>	FRESNO APP CON <b>119.0 323.25</b>	CLNC DEL <b>119.0</b>	UNICOM <b>123.0 (CTAF) 0</b>
--------------------------	---------------------------------------	--------------------------	---------------------------------



ELEV 280	TDZE 280
----------	----------



4 NM Holding Pattern	SIPZY	EWNEL	800	2000	FRAME
6000 ← 291°	3000 → 111°	111°	1900	1.4 NM to RW12	RW12
GP 3.00°	TCH 40	1900	6.1 NM	3.5 NM	1.4 NM
CATEGORY	A	B	C	D	
LPV DA	530-1 250 (300-1)			NA	
LNAV/VNAV DA	809-1½ 529 (600-1½)			NA	
LNAV MDA	780-1	500 (500-1)	780-1⅜ 500 (500-1⅜)	NA	
<span style="border: 1px solid black; padding: 2px;">■</span> CIRCLING	960-1	680 (700-1)	960-2 680 (700-2)	NA	

SW-2, 03 OCT 2024 to 31 OCT 2024

SW-2, 03 OCT 2024 to 31 OCT 2024