


LOC I-HUT <b>110.1</b>	APP CRS <b>134°</b>	Rwy Idg TDZE Apt Elev	<b>7003</b> <b>1525</b> <b>1543</b>
---------------------------	------------------------	-----------------------------	---

# ILS or LOC RWY 13

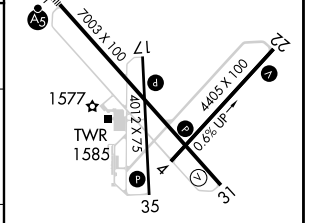
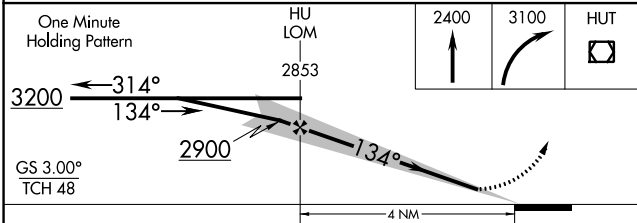
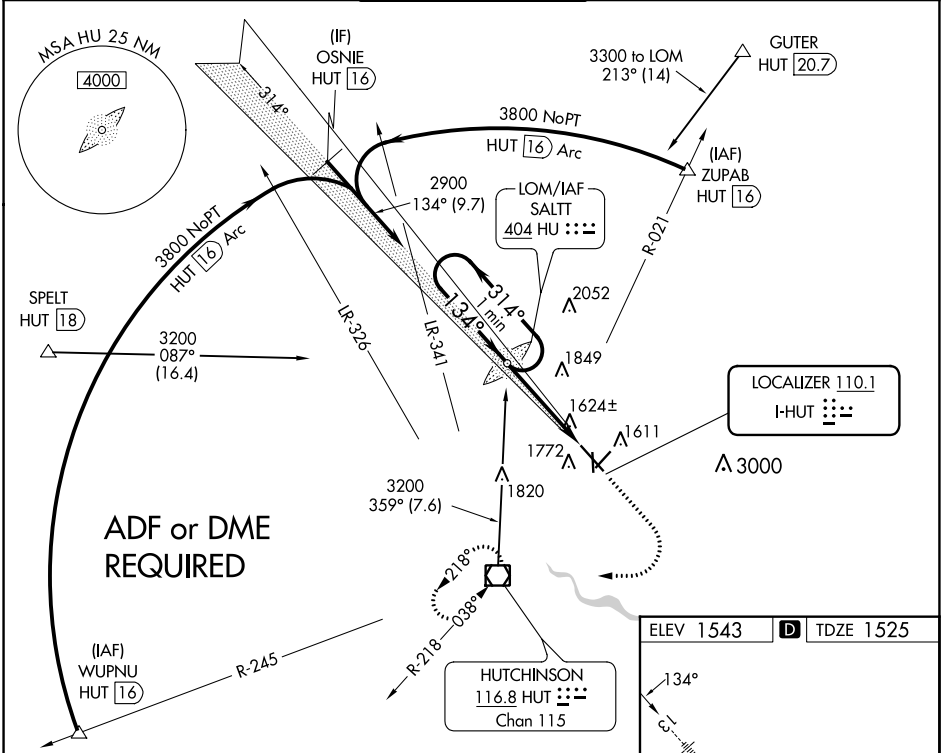
HUTCHINSON RGNL (HUT)

**⚠** When VGSi inop, Circling Rwy 22 NA at night.  
 For inop ALS, increase S-LOC Rwy 13 Cat C/D visibility to RVR 5500.  
 \*RVR 1800 authorized with use of FD or AP or HUD to DA.

MALSR 

MISSED APPROACH: Climb to 2400 then climbing right turn to 3100 direct HUT VOR/DME and hold.

ATIS <b>124.25</b>	WICHITA APP CON <b>125.5 306.2</b>	HUTCHINSON TOWER * <b>118.5 (CTAF) 363.0</b>	GND CON <b>121.9</b>	UNICOM <b>122.95</b>
-----------------------	---------------------------------------	---	-------------------------	-------------------------



CATEGORY	A	B	C	D
S-ILS 13*	1725/24 200 (200-½)			
S-LOC 13	1880/24	355 (400-½)	1880/30	355 (400-¾)
<b>C</b> CIRCLING	2080-1	537 (600-1)	2200-1¾ 657 (700-1¾)	2720-3 1177 (1200-3)

REIL Rwys 4, 22 and 31  
 HIRL Rwy 13-31  
 MIRL Rwys 4-22 and 17-35  
 FAF to MAP 4 NM

Knots	60	90	120	150	180
Min:Sec	4:00	2:40	2:00	1:36	1:20

NC-2, 03 OCT 2024 to 31 OCT 2024

NC-2, 03 OCT 2024 to 31 OCT 2024