

LOC I-CRG 111.7	APP CRS 321°	Rwy ldg TDZE Apt Elev	4008 41 41
---------------------------	------------------------	-----------------------------	---------------------------------------

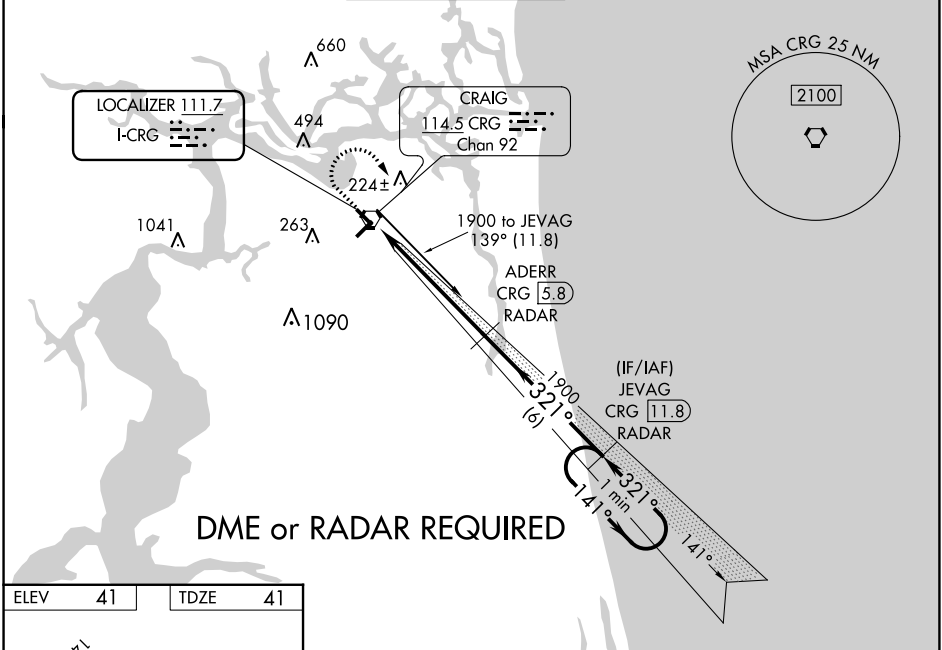
ILS or LOC RWY 32

JACKSONVILLE EXEC AT CRAIG (CRG)

⚠ Night landing: Rwy 5 NA. DME or radar required. Helicopter visibility reduction below 1 SM NA. When local altimeter setting not received, use Jacksonville Intl altimeter setting: increase DA to 273 feet; increase all MDAs 40 feet and Circling visibility Cat C ¼ SM. For inop MALS, increase S-LOC 32 Cats C/D visibility to 1¼ mile. For inop MALS, when using Jacksonville Intl altimeter setting, increase S-LOC 32 Cats C/D visibility to 1⅜ mile.

MALS	MISSED APPROACH: Climb to 700 then climbing right turn to 1900 on heading 180° and on CRG VORTAC R-139 to JEVAG/CRG VORTAC 11.8 DME/RADAR and hold.
------	---

ATIS 125.4	JACKSONVILLE APP CON 124.9 308.4	CRAIG TOWER ★ 132.1 (CTAF) 269.525	GND CON 121.8	CLNC DEL 118.35	UNICOM 122.95
----------------------	--	---	-------------------------	---------------------------	-------------------------

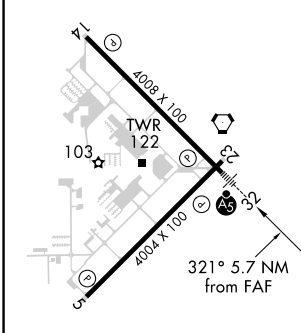


SE-3, 03 OCT 2024 to 31 OCT 2024

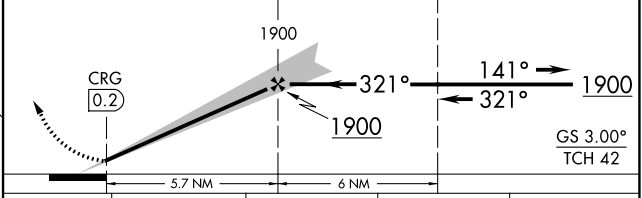
SE-3, 03 OCT 2024 to 31 OCT 2024

DME or RADAR REQUIRED

ELEV	41	TDZE	41
------	----	------	----



700	1900	CRG R-139	JEVAG CRG 11.8	ADERR CRG 5.8	JEVAG CRG 11.8	One Minute Holding Pattern
↑	hdg 180°			RADAR	RADAR	



FAF to MAP 5.7 NM					
Knots	60	90	120	150	180
Min:Sec	5:42	3:48	2:51	2:17	1:54

CATEGORY	A	B	C	D
S-ILS 32		241-1	200 (200-1)	
S-LOC 32		480-1	439 (500-1)	
CIRCLING	500-1 459 (500-1)	600-1 559 (600-1)	620-1½ 579 (600-1½)	800-2½ 759 (800-2½)