

WAAS CH 63031 W14A	APP CRS 141°	Rwy Idg 4008 TDZE 41 Apt Elev 41
--	------------------------	---

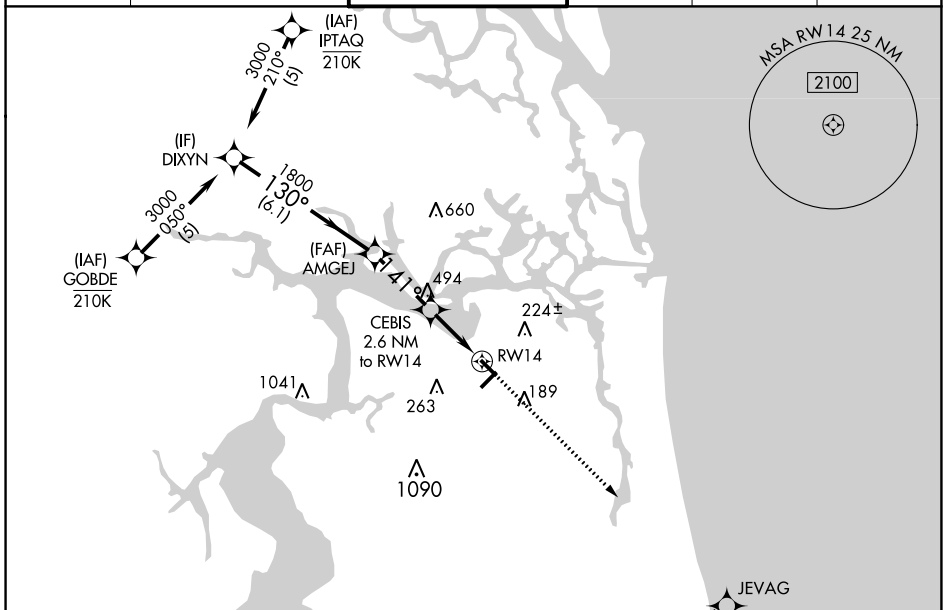
RNAV (GPS) RWY 14

JACKSONVILLE EXEC AT CRAIG (CRG)

⚠ Procedure NA at night. Baro-VNAV NA when using Jacksonville Intl altimeter setting. For uncompensated Baro-VNAV systems, LNAV/VNAV NA below -3°C (27°F) or above 54°C (130°F).
⚠ DME/DME RNP-0.3 NA. Helicopter visibility reduction below 1 SM NA. When local altimeter setting not received, use Jacksonville Intl altimeter setting; increase LPV DA to 325 feet; increase LNAV/VNAV DA to 450 feet and all visibilities ½ SM; increase all MDAs 40 feet and Circling visibility Cat C ¼ SM.

MISSED APPROACH:
Climb to 1900 direct JEVAG and hold.

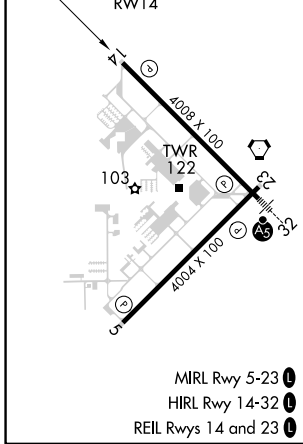
ATIS 125.4	JACKSONVILLE APP CON 124.9 308.4	CRAIG TOWER ★ 132.1 (CTAF) 269.525	GND CON 121.8	CLNC DEL 118.35	UNICOM 122.95
----------------------	--	--	-------------------------	---------------------------	-------------------------



SE-3, 03 OCT 2024 to 31 OCT 2024

SE-3, 03 OCT 2024 to 31 OCT 2024

ELEV	41	TDZE	41
------	----	------	----



RADAR REQUIRED

	DIXYN	AMGEJ	CEBIS 2.6 NM to RWY 14	RWY 14
	3000	1800	*900	
	130°	141°		
	6.1 NM	2.8 NM	2.6 NM	
GP 3.00°	TCH 44			
CATEGORY	A	B	C	D
LPV DA	293-1		252 (300-1)	
LNAV/VNAV DA	418-1¼		377 (400-1¼)	
LNAV MDA	500-1	459 (500-1)	500-1⅓	459 (500-1⅓)
CIRCLING	500-1 459 (500-1)	600-1 559 (600-1)	620-1½ 579 (600-1½)	800-2½ 759 (800-2½)