

WAAS CH <b>57901</b> <b>W32A</b>	APP CRS <b>321°</b>	Rwy Idg <b>4008</b> TDZE <b>41</b> Apt Elev <b>41</b>
--	------------------------	---

# RNAV (GPS) RWY 32

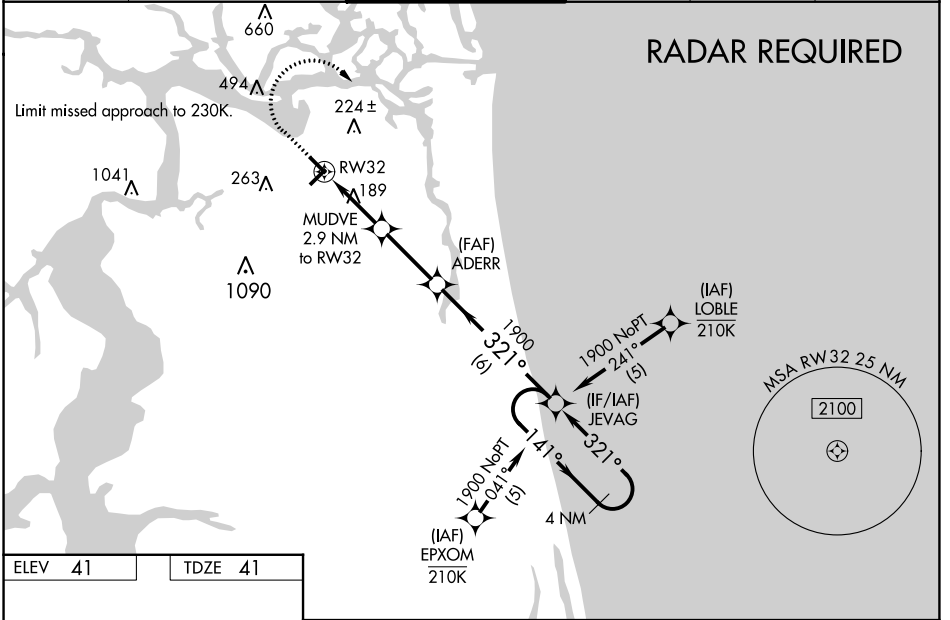
JACKSONVILLE EXEC AT CRAIG (CRG)

**⚠** Night landing: Rwy 5 NA. Baro-VNAV and VDP NA when using Jacksonville Intl altimeter setting. For uncompensated Baro-VNAV systems, LNAV/VNAV NA below -3°C (27°F) or above 54°C (130°F). DME/DME RNP-0.3 NA. Helicopter visibility reduction below ¼ SM NA. VDP NA with Jacksonville Intl altimeter setting. When local altimeter setting not received, use Jacksonville Intl altimeter setting: increase LPV DA to 273 feet; increase LNAV/VNAV DA to 413 feet; increase all MDAs 40 feet and Circling visibility Cat C ¼ SM. For inop MALS, when using Jacksonville Intl altimeter setting, increase LNAV/VNAV all Cats visibility to 1½ and LNAV Cats C/D visibility to 1¼.

**MALS**

**MISSED APPROACH:**  
Climb to 700 then climbing right turn to 1900 direct JEVAG and hold.

ATIS <b>125.4</b>	JACKSONVILLE APP CON <b>124.9 308.4</b>	CRAIG TOWER ★ <b>132.1 (CTAF) 269.525</b>	GND CON <b>121.8</b>	CLNC DEL <b>118.35</b>	UNICOM <b>122.95</b>
----------------------	--	--	-------------------------	---------------------------	-------------------------

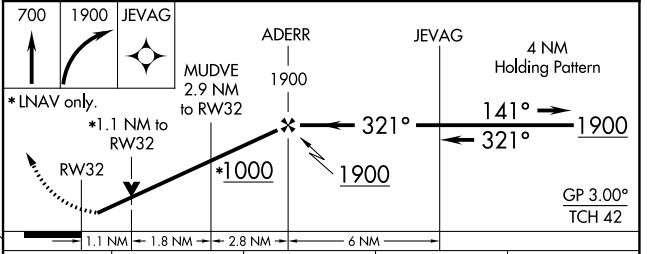
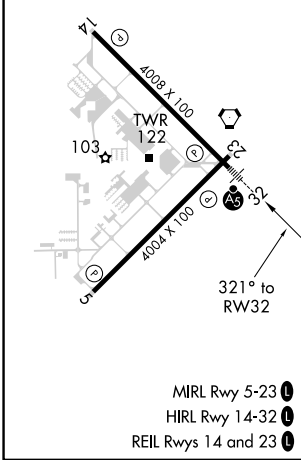


**RADAR REQUIRED**

SE-3, 03 OCT 2024 to 31 OCT 2024

SE-3, 03 OCT 2024 to 31 OCT 2024

ELEV 41	TDZE 41
---------	---------



CATEGORY	A	B	C	D
LPV DA		241-1	200 (200-1)	
LNAV/VNAV DA		381-1	340 (400-1)	
LNAV MDA		440-1	399 (400-1)	
CIRCLING	500-1 459 (500-1)	600-1 559 (600-1)	620-1½ 579 (600-1½)	800-2½ 759 (800-2½)